



WATERWORKS  
**KITCHEN**

furnishings



# all the necessary furnishings

Personalize your kitchen experience with serving ware, cutting boards, table linens and accent pieces. Authentic, handmade and one-of-a-kind selections come from the U.S., Europe and Asia; the style spectrum goes from modern and minimalist to rare and rustic.

# meet the families

Ancona	Market
Aragon	Marlowe
Bella	Masa
Bistro	Matrix
Bourne	Pedra
Brentwood	Pesa
Caffe	Poppy
Canyon Drive	Prescott
Chamberlain	Preston
Chandler	Quarry
Clancy	Secco
Clarion	Spencer
Cortona	Stringer
Dash	Tavern
Draper	Treen
Forma	Tresser
Fraser	Turner
Harvest	Valet
Hatchway	Vinter
Hobbs	Waterworks Kitchen
Klei	

[see back for pricing details](#)





# Ancona

Bring an authentic taste of Tuscany to your table with rich and artful serving pieces. Each terra cotta piece is handcrafted by artisans in Italy and hand glazed. Custom patterns created exclusively for Waterworks. Versatile in function, from hot casseroles to cold drinks.

## Ancona



Large Serving Bowl  
Green  
13 3/4" x 4 3/4" ANBO02  
22-22608-73334



Large Serving Bowl  
Multi Color  
13 3/4" x 4 3/4" ANBO02  
22-43055-74549



Round Serving Platter  
Green  
16" x 1 1/2" ANPA01  
22-51845-57656



Casserole Dish  
Green  
16" x 6 1/2" ANBW01  
22-42405-69864



Casserole Dish  
Multi Color  
16" x 6 1/2" ANBW01  
22-26927-35616



Round Serving Platter  
Multi Color  
16" x 1 1/2" ANPA01  
22-79192-17169



Pitcher  
Multi Color  
7 1/2" x 6 3/4" ANPI01  
22-67362-08447

# Aragon

Known for its unique properties, fine-grained Italian alabaster from Volterra gives Aragon a warm and luminous tone. Drawing upon a centuries-old tradition, trays and serveware feature artistic veining ranging from light gray to dark brown that render these rich white pieces classic for any occasion.



## Aragon



Small Round Tray

White  
15 5/8"

AGTR01  
22-03915-43119



Large Round Tray

White  
16 1/2"

AGTR02  
22-62129-82441





Bella



Short Canister  
Clear  
8 1/4" x 10 1/2" EBCN01  
22-71981-54370



Tall Canister  
Clear  
8 1/4" x 14" EBCN02  
22-32967-96146

Bella

Simple and sophisticated storage. Keep your favorite treats and often-used ingredients close at hand in these clear glass canisters with elegant tin lids. Modern-retro styling and generously sized to easily accommodate a variety of items. Beautiful in the kitchen, bar or dining room.





# Bistro

For the enthusiastic cook or the consummate host, Bistro aprons—in designs for him, her or unisex—ease everyday kitchen preparations. Pockets for functionality, adjustable straps and attractive detailing add effortless style and functionality.

## Bistro



His Apron

CharcoalOne Size

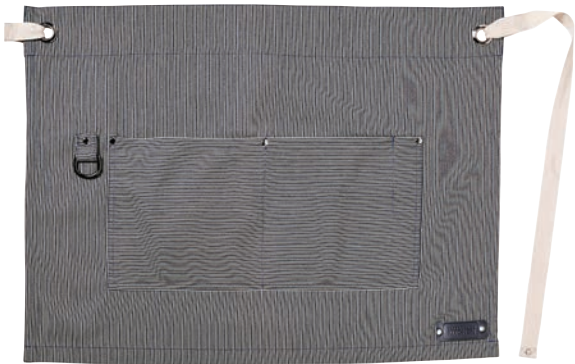
BSAP0133-84207-19796



Her Apron

ChambrayOne Size

BSAP0233-00474-29737



Café Apron

IndigoOne Size

BSAP0333-27033-24929

## Color Palette



Charcoal



Chambray



Indigo





# Bourne

The personal feel of our Bourne collection derives from a process of being sculpted by hand and cast in small batches by color. The resulting two-tone bowls are each an expression of individuality.

## Bourne



Small Two-Tone Bowl  
White / Cement  
9 1/2" x 3" BRBO01  
22-62080-55757



Medium Two-Tone Bowl  
White / Cement  
12 1/2" x 3 1/2" BRBO02  
22-42008-81898



Large Two-Tone Bowl  
White / Cement  
15 3/4" x 4 1/2" BRBO03  
22-91417-15197



# Brentwood

Elegantly rustic specialty and serving pieces are cleverly crafted by artisans in America. Salt cellar and rolling pins with sculptural knobs are made from reclaimed Atlantic City Boardwalk hardwood, while chopping blocks, serving boards and platters boast oak and American walnut.

## Brentwood



Small Serving Board  
Walnut 8" x 16" BNCT04 19-49852-05532



Round Chopping Board  
Fumed White Oak 14" x 2 1/2" BNCT03 22-33517-56430



Butcher Block  
Walnut 14" x 24" x 3" BNCT01 22-67426-45594



Salt Cellar  
Natural 3" x 3" x 3" BNSE01 22-32832-12709



Tapered Rolling Pin  
Light Natural 21" x 2" BNRP01 19-79906-04472



Tapered Rolling Pin  
Dark Natural 21" x 2" BNRP01 19-50031-46015



Tapered Rolling Pin  
Light Natural 21" x 1 1/4" BNRP02 19-05871-10409



Tapered Rolling Pin  
Dark Natural 21" x 1 1/4" BNRP02 19-40857-94983



Tapered Rolling Pin  
Light Natural 20" x 1 3/4" BNRP03 19-71027-50023



Tapered Rolling Pin  
Dark Natural 20" x 1 3/4" BNRP03 19-20323-06144



Acorn Rolling Pin  
Walnut 22" x 2 1/4" BNRP04 19-26191-50922



Spindle Rolling Pin  
Walnut 22" x 2 1/4" BNRP05 19-45769-76820



Sculptural Rolling Pin  
Walnut 22" x 2 1/4" BNRP06 19-05651-39562



Wood Conditioner  
BNCC01 40-91931-25223





# Caffe

Caffe’s jolt of espresso invigorates, as sturdy woven rectangular placemats are at once welcomingly neutral and modernly distinct.

## Caffe

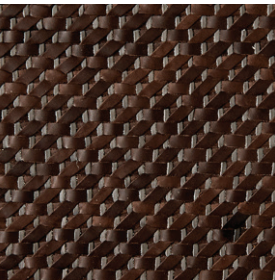


Placemat  
Espresso  
14" x 19" CFPM01  
33-92210-28430



Table Runner  
Espresso  
14" x 59 ¼" CFRN01  
33-02301-49054

## Color Palette



Espresso





# Canyon Drive

Canyon Drive’s mid-century appeal references the Palm Spring’s mecca, evident in its modern design. Pedestals and trivets made of solid ebonized oak or black walnut with brass give solid foundation to table and countertop settings.

## Canyon Drive



Small Wood Pedestal  
Black Walnut CDPD01  
9" x 7" 19-82790-73421



Large Wood Pedestal  
Black Walnut CDPD02  
12" x 5" 19-93506-57318



Signature Trivet  
Black Walnut CDTV02  
9" x 16" 19-48196-73188



Round Trivet  
Ebonized Oak CDTV01  
10" 19-93121-49944



Ice Bucket  
Ebonized Oak CDIB01  
7 ¾" x 8 ¾" 19-70118-51280



# Chamberlain

Inspired by the timeless silhouettes of antique Italian pewter, each piece of the Chamberlain collection is molded, smoothed and polished to perfection—creating the look of a time-honored heirloom updated for modern day.



## Chamberlain



Bowl  
Pewter CBBO01  
11" x 2 ½" 22-46744-94588



Footed Bowl  
Pewter CBBO02  
12 ½" x 4 ½" 22-72113-91379



Shaped Pitcher  
Pewter CBPI02  
7 ½" x 10" 22-52440-21495



Large Rectangular Tray  
Pewter CBTR03  
16" x 11 ½" 22-86786-81004



Small Octagon Tray  
Pewter CBTR04  
11 ¼" x 11 ¼" 22-13856-26303



Medium Octagon Tray  
Pewter CBTR05  
13 ¼" x 13 ¼" 22-31938-24273



Ice Bucket  
Pewter CBIB01  
7" x 8 ¼" 19-85701-20194



Small Hurricane  
Pewter CBHR01  
7 ¼" x 9 ½" 19-21372-92836



Medium Hurricane  
Pewter CBHR02  
8" x 12" 19-42946-17599



# Chandler

A Waterworks first. Varying heights of Chandler decorative tapered candles mix and match to create an appropriate mood on any tablescape. 100% beeswax in colors exclusive to Waterworks, they warm up any surroundings.

## Chandler



Pair of Square Taper Candle  
Bittersweet 12"      CCCA01  
19-40135-40985



Pair of Square Taper Candle  
Natural 12"      CCCA01  
19-57263-38119



Pair of Square Taper Candle  
Antique 12"      CCCA01  
19-11338-76110



Pair of Square Taper Candle  
Cream 16"      CCCA02  
19-14904-73615



Pair of Square Taper Candle  
Black 16"      CCCA02  
19-08659-10647



Pair of Square Taper Candle  
Mayflower Blue 16"      CCCA02  
19-08659-10647



Pair of Rope Taper Candle  
Cream 10"      CCCA03  
19-80931-92363



Pair of Rope Taper Candle  
Wine 10"      CCCA03  
19-62554-83258



Pair of Rope Taper Candle  
Mayflower Blue 10"      CCCA03  
19-42600-38184





# Clancy

The unmatched luster of Clancy brass and copper is the picture of luminescence on the table. Food-safe, lead-free brass bowls create the ultimate serving pieces.

## Clancy



Small Bowl  
Brass  
6 3/4" x 3"      CYBO01  
22-52371-34903



Medium Bowl  
Brass  
9 1/2" x 3"      CYBO02  
22-29602-98774



Large Bowl  
Brass  
12" x 3 1/4"      CYBO03  
22-99160-30900



Small Bowl  
Copper  
6 3/4" x 3"      CYBO01  
22-75737-39192



Medium Bowl  
Copper  
9 1/2" x 3"      CYBO02  
22-84481-65319



Large Bowl  
Copper  
12" x 3 1/4"      CYBO03  
22-15042-57253



# Clarion

Simple enough for everyday use and absolutely elegant for entertaining. These clear, mouth blown glass decanters and hurricanes are beautiful on the bar, kitchen counter or dining table. Ideal for serving water, wine, mimosas or mixed drinks. Made in Europe; no two are the same.

## Clarion

			
<div>Votive Holder</div> <div>ClearCNHR04 2 1/2" x 2 3/4"22-34685-81617</div>	<div>Votive Holder</div> <div>SmokeCNHR04 2 1/2" x 2 3/4"22-92551-12855</div>	<div>Extra Small Hurricane</div> <div>ClearCNHR02 4 3/4" x 6"22-54246-22434</div>	<div>Extra Small Hurricane</div> <div>SmokeCNHR02 4 3/4" x 6"22-46935-35837</div>
			
<div>Small Hurricane</div> <div>ClearCNHR03 6" x 8 3/4"22-97966-69968</div>	<div>Small Hurricane</div> <div>SmokeCNHR03 6" x 8 3/4"22-80091-42721</div>	<div>Large Hurricane</div> <div>ClearCNHR01 10 1/4" x 7"22-88224-80855</div>	<div>Large Hurricane</div> <div>SmokeCNHR01 10 1/4" x 7"22-93622-16221</div>
			
<div>Extra Small Candle</div> <div>IvoryCNCA02 1 1/2" x 3 1/4"19-87879-40579</div>	<div>Small Candle</div> <div>IvoryCNCA03 1 1/2" x 5 1/4"19-07316-64895</div>	<div>Large Candle</div> <div>IvoryCNCA01 1 15/16" x 7 3/4"19-05915-20199</div>	<div>Large Carafe</div> <div>ClearCNCF02 4 1/2" x 12"22-80469-37769</div>



# Cortona

You'll be inspired to dine al fresco under summer skies with these creamy and warm serving pieces. Perfect for bringing farm fresh creations to the table, each terra cotta piece is crafted by artisans in Italy and hand glazed.



## Cortona



Medium Serving Bowl

Cream  
10 ¼" x 3 ½"

CRBO02  
22-69190-42518



Large Serving Bowl

Cream  
12 ½" x 4 ½"

CRBO03  
22-61761-31186



Oval Platter

Cream  
20 ¾" x 13" x 2 ¾"

CRPA02  
22-81110-75366



Small Pitcher

Cream  
7 ½" x 6 ¼"

CRPI01  
22-62769-55018



# Dash

Created for culinary artistry in the tradition of fine French cabinet making, these wood cutting boards are both simple and intricate. Made from hornbeam end grain wood with Beachwood surrounds. Available with brass and stainless corner accents.

## Dash



Cutting Board

Brass	DSCT01
20 ½" x 15 ¾"	22-37842-45005



Cutting Board

Stainless Steel	DSCT01
20 ½" x 15 ¾"	22-85781-89567



# Draper

Inspired by Mid-Century design and social entertaining, our handsome Draper barware adds a contemporary flourish. A glass carafe, wrapped in removable leather with metal detailing, lends unmistakable style to cocktail carts and sophisticated bars.



## Draper



Small Glass & Leather Water Carafe

Clear / Black  
3 1/2" x 9"

DPCF01  
22-61634-34281



Large Glass & Leather Water Carafe

Clear / Black  
4 1/4" x 11"

DPCF02  
22-86833-19341





# Forma

Made with high-quality domestic beeswax from the Northeast, the subtle floral notes of each Forma sculpted candle may vary slightly, similar to honey, giving each a point of distinction. Such individuality lights up and adds ambiance to living spaces throughout the home.

# Forma



Shaped Short Pillar  
Natural  
2 ½" x 4 ¼"      FXCA01  
19-17895-30293



Shaped Short Pillar  
Cream  
2 ½" x 4 ¼"      FXCA01  
19-32131-48294



Shaped Tall Pillar  
Natural  
1 ¾" x 8 ¾"      FXCA03  
19-50812-69194



Shaped Medium Pillar  
Gray  
2 ¼" x 6 ½"      FXCA02  
19-68900-42154



Shaped Medium Pillar  
Black  
2 ¼" x 6 ½"      FXCA02  
19-43979-47492



Shaped Tall Pillar  
Cream  
1 ¾" x 8 ¾"      FXCA03  
19-17463-94386









## Harvest



Medium Basket

Natural	HSBA01
24" x 18 1/2" x 7 3/4"	19-76440-85668



Large Basket

Natural	HSBA02
27 1/2" x 21 3/4" x 8 3/4"	19-05125-56537

# Harvest

From summer garden to autumn orchard, these King wicker harvest baskets and trays with leather handles are perfect for carrying nature’s bounty indoors. The baskets are large and deep to provide plenty of storage for food, cookbooks or linens.





# Hatchway

Light as a feather yet extraordinarily sturdy, Hatchway's thin linen waffle absorbs superbly and dries quickly, getting softer with wear while retaining its shape. A simple small-scale design in serene colors provides a sense of calm, for every purpose in the home.

## Hatchway



Kitchen Towel

White	HCKT01
20" x 28"	33-96938-43617



Kitchen Towel

Silver	HCKT01
20" x 28"	33-30011-08991



Kitchen Towel

Aloe Green	HCKT01
20" x 28"	33-25466-71239



Kitchen Towel

Ice Blue	HCKT01
20" x 28"	33-65046-99468

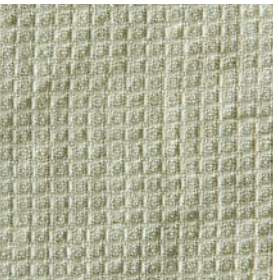
## Color Palette



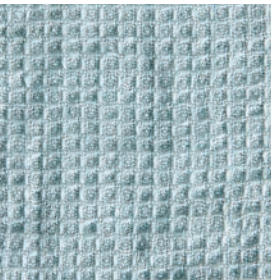
White



Silver



Aloe Green



Ice Blue





# Hobbs

A decorative addition to the tabletop, each solid brass bowl and tray becomes unique over time as Hobbs acquires an evolving patina. The mysterious allure of this artful tarnish gives rich character to each piece.

## Hobbs



Small Bowl

Brass  
12" x 4"

HBBO01  
22-27115-80430



Large Bowl

Brass  
15 1/4" x 4"

HBBO02  
22-75740-78814



Round Tray

Brass  
15 1/2" x 2 1/2"

HBTR01  
22-00802-08671





# Klei

An exclusive finish of matte glaze and sandstone adds individuality and allure to each Klei piece, handmade in the USA. Protected with a high-fired technique, ceramic canisters are ideal for storing pasta or displaying flowers, while trays and sugar and creamer sets are ready made for entertaining.

## Klei



Small Canister  
White / Sandstone  
4" x 6" KLCN01  
19-76760-86819



Medium Canister  
White / Sandstone  
5" x 8" KLCN02  
19-41251-82231



Large Canister  
White / Sandstone  
6" x 10" KLCN03  
19-35192-87376



Medium Round Flat Tray  
White / Sandstone  
10" KLTR01  
19-71445-56112



Sugar & Creamer Set with Tray  
White / Sandstone  
Sugar: 2 ½" x 2"  
Creamer: 1 ¾" x 2 ½"  
Tray: 5 ½" x 1" KLSW01  
19-68118-28664



# Market

A daily staple for carrying wine or groceries, Market totes are built to beautifully withstand wear and tear from visits to the farm stand or grocery store. Sturdy heavyweight leather handles, nickel rivet detailing and waxed canvas are built to last, yet elevate the everyday aesthetic.



## Market



Tote  
Charcoal  
One Size  
MKTT01  
19-38595-46779



Wine Tote  
Charcoal  
One Size  
MKTT02  
19-53177-75154

## Color Palette



Charcoal





# Marlowe



Low Round Tray  
Black / Gold  
12" x 1" METR02  
22-43283-05845



Round Tray  
Black / Gold  
15" x 2 1/4" METR03  
22-63764-44901

# Marlowe

Smooth Marlowe trays are equally stylish on the bar, dining table, or in the study. Accented with gold trim, each individualized hand-poured resin piece is born from a process of being molded and hand sanded, ensuring no two are the same.





# Massa

Old-world influences are crafted into this modern gourmet kitchen essential. The classic Carrara marble mortar and hand-finished wood pestle are made in Italy. Each is designed to work perfectly against one another for grinding spices and herbs. Functional and decorative.

## Massa



Carved Mortar & Pestle

Carrara  
7 1/2" x 5 1/2" x 4 3/4"

MMMP01  
22-90795-46993



Round Mortar & Pestle

Carrara  
6 1/4" x 3 3/4"

MMMP02  
22-37624-43293





# Matrix

Shaped and sculpted in free form for a distinctive dining experience. At once organic and modern, these unique pieces are made from resin in a process that makes molds from handcrafted forms. Each piece is individually cast in small batches by color.

## Matrix



Small Bowl  
Gray  
11" x 4 ¼" MUB001  
22-86739-68248



Large Bowl  
Gray  
15 ½" x 4 ½" MUB003  
22-77696-69368



Set of Three Bowls & Tray  
Gray  
14 ¾" x 5" x 2 ¾" MUB004  
22-92370-25483





# Pedra

A truly unique addition that encompasses our heritage of intuitive design and high functionality. A lofty take on the traditional pizza stone, Pedra can be used for serving or cooking. Incorporating copper and soapstone materials featured throughout companion collections, it is ideal for simply serving cheese and crackers or more ambitious grilling. An instant Waterworks favorite.

## Pedra



Small Round Grill  
Soapstone  
10 ½" PABW01  
19-83349-58549



Large Round Grill  
Soapstone  
15" PABW02  
19-41613-19168





# Pesa

Sculptural, yet ever functional, our Pesa ceramics are at home whether in use or on display. Kiln-fired containers made of glazed Tuscan earthenware offer a creamy, classic appeal in the kitchen.

## Pesa



Small Bowl with Spout  
Cream PSBO01  
9 ½" x 4 ¼" 22-46619-14470



Large Bowl with Spout  
Cream PSBO03  
12 ½" x 6 ½" 22-38005-96387



Utensil Canister  
Cream PECA04  
7 ½" x 7 ¾" 22-38275-93596



Small Canister  
Cream PECA01  
5 ¾" x 8 ¼" 22-55331-52425



Medium Canister  
Cream PECA02  
5 ¾" x 10 ½" 22-46652-64614



Large Canister  
Cream PECA03  
5 ¾" x 12 ½" 22-76647-90975



Nested Mixing Bowls  
Cream PEBO04  
Small: 7" x 2 ¼" 22-17931-39595  
Medium: 9 ¼" x 2 ¼"  
Large: 11" x 3"



# Poppy

Perfect for pasta or other chef delights, glass-blown apothecary jars are best in eye-catching colors—Waterworks Kitchen's signature burnt red, or ever-appealing gray.



## Poppy



Small Apothecary Jar

Morel  
5 3/4" x 10 3/4"

PYJA01  
19-98152-54129



Small Apothecary Jar

Papaya  
5 3/4" x 10 3/4"

PYJA01  
19-55732-92606



Large Apothecary Jar

Morel  
4 5/8" x 16 1/8"

PYJA02  
19-73498-13655



Large Apothecary Jar

Papaya  
4 5/8" x 16 1/8"

PYJA02  
19-97731-49867





# Prescott

Polished to perfection. Fine pewter accessories with attractive rattan detailing are handcrafted in Sheffield, England using traditional metalsmithing techniques. All pieces are cast, buffed and polished by hand. Appropriate for food service.

## Prescott



Tray with Rattan Handles  
Polished Pewter                      PCTR01  
14"                                      22-56155-42402



Small Pitcher with Rattan Handles  
Polished Pewter                      PCPI01  
4" x 4"                                      22-02419-36096



Large Pitcher with Rattan Handles  
Polished Pewter                      PCPI03  
7" x 7"                                      22-28436-47538



Small Wine Coaster  
Polished Pewter                      PCWR01  
3 1/2" x 1 3/4"                                      22-95619-32273



Large Wine Coaster  
Polished Pewter                      PCWR02  
5 1/2" x 1 3/4"                                      22-60309-39896





# Preston



Ice Bucket with Pewter Handles

Copper / Pewter	PPIB01
8 ½" x 7 ½"	19-17096-24605

# Preston

Carefully crafted by artisans in the U.K., Preston’s stately combination of a copper ice bucket with pewter handles illustrates the beauty of mixed metals.





# Quarry



Small Serving Board

Prunella  
7 3/4" x 7 3/4"

QRPA02  
22-80755-55126



Large Serving Board

Prunella  
10" x 16"

QRPA01  
22-07156-35827

# Quarry

Of substance and style, our Quarry kitchen accessories are cut from bold Calcutta marble and hand polished to a smooth finish. Each uniquely marked trivet and serving board features decorative brass feet in a nickel finish. The marble holds hot and cold dishes and is food safe.



# Secco

A kitchen classic: For cooking, cleaning, serving or entertaining, artfully striped towels in multiple colorways serve endless purpose at the sink, stove or table. True to its name, which translates to “dry” in Italian, Secco’s classic linen material is easily used again and again.



## Secco



Kitchen Towel

Multi Green  
22 ½" x 28 ¾"

SEKT02  
33-25816-08851



Kitchen Towel

Multi Red  
22 ½" x 28 ¾"

SEKT02  
33-70234-63921



Kitchen Towel

Cream / Green  
24 ¾" x 28 ½"

SEKT01  
33-13579-06947



Kitchen Towel

Cream / Red  
24 ¾" x 28 ½"

SEKT01  
33-64840-32882

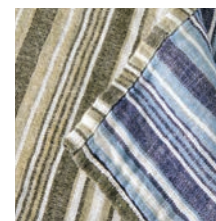


Kitchen Towel

Cream / Blue  
24 ¾" x 28 ½"

SEKT01  
33-53915-33424

## Color Palette



Multi Green



Multi Red



Cream / Green



Cream / Red



Cream / Blue





# Stringer

A complete look for today's kitchen, these black walnut accessories and serving pieces are clean and modern in design. Available in a range of custom colors that are exclusive to Waterworks. Precise machine and hand craftsmanship. Finished with food-safe tung oil.

## Stringer



Platter  
Cosmos  
18" x 12" SGPA01  
22-76127-93727



Platter  
Midnight  
18" x 12" SGPA01  
22-22055-41559



Small Cutting Board  
Cosmos  
12 1/2" x 8" SGCT01  
22-18425-87997



Small Cutting Board  
Midnight  
12 1/2" x 8" SGCT01  
22-09492-07869



Large Cutting Board  
Cosmos  
18" x 11 1/2" SGCT02  
22-66419-76243



Large Cutting Board  
Midnight  
18" x 11 1/2" SGCT02  
22-63752-03386





# Tavern

Refined pewter adds elegance to the traditional cocktail shaker and jigger—a must for the at-home bar. Shaken or stirred, home-crafted drinks have an added elegance when poured from the finest accessories.

## Tavern



Cocktail Shaker  
Pewter  
3 1/4" x 7 1/4" TVBE01  
19-91122-40567



Double Jigger  
Pewter  
2" x 3 3/4" TVBE02  
19-32868-93712



# Treen

Rare and wonderful. Create new rituals with these antique temple and serving trays from Bali and Java. Each vintage piece is absolutely unique and characterized by time-worn markings. Made from teak, sago and hardwoods. Finished with a protective coating.



## Treen



Bowl  
Java  
12 ½" x 9 ½" x 4 ½" TNBO01  
22-38937-22812



Bowl  
Java  
16" x 12" x 5" TNBO02  
22-11783-86786



Bowl  
Java  
15 ¼" x 12" x 4 ¾" TNBO03  
22-66982-35488



Bowl  
Java  
15 ½" x 13 ½" x 5 ¼" TNBO04  
22-42546-70849



Bowl  
Java  
16 ½" x 14 ¾" x 5" TNBO05  
22-14615-30508



Medium Round Tray  
Java  
17 ½" x 1 ½" TNTR02  
22-87544-24034



Footed Tray  
Java  
17 ¼" x 10 ¼" TNTR01  
22-96636-28015

\* These are vintage pieces from the early 1900's. Sizes and finishes may vary as no two pieces are exactly alike.

Limited availability in select showrooms



# Tresser

Inspired by the traditional braiding techniques to which its French moniker alludes, the collection's natural wicker round trays are appropriately sized to serve myriad purposes on the kitchen island, table or anywhere else in the home. Tressor adapts to and elevates the everyday.



## Tresser



Small Round Tray

Natural  
17 3/4" x 4 1/2"

TSBA01  
19-38196-74205



Medium Round Tray

Natural  
21" x 4 3/4"

TSBA02  
19-33367-44961



Turner

Turner

An American original. Reminiscent of the beauty of the modern natural world, black walnut and ebonized oak candlesticks, hand-turned in the USA, illuminate and enrich settings from traditional to contemporary.



Small Turned Candlestick  
Black Walnut TUCK01  
3 5/16" x 4" 19-16110-45244



Small Turned Candlestick  
Ebonized Oak TUCK01  
3 5/16" x 4" 19-35803-71049



Large Turned Candlestick  
Black Walnut TUCK03  
4" x 8" 19-58981-58076



Medium Turned Candlestick  
Black Walnut TUCK02  
3 5/8" x 6" 19-45902-93162



Medium Turned Candlestick  
Ebonized Oak TUCK02  
3 5/8" x 6" 19-93456-89592



Large Turned Candlestick  
Ebonized Oak TUCK03  
4" x 8" 19-19012-32213

\* All candlesticks accommodate a standard 3" diameter pillar candle.





# Valet

Both casual in feel and elegant in simplicity, these trays are hand woven from natural, dried stalks of the Water Hyacinth plant. Carry handles add form and function, making the trays perfect for entertaining and decorating.

## Valet



Medium Round Tray

Natural	VLTR01
15 3/4" x 4 3/4"	22-81127-00793



Extra Large Round Tray

Natural	VLTR03
23 3/4" x 5"	22-48722-27353





# Vintner

An evening of wine and cheese, re-imagined. These unique serving pieces and platters are crafted from authentic, aged oak wine barrel heads that have been reclaimed and meticulously refinished. Hand forged iron handles and a stamped vintner's seal are the finishing touches.

## Vintner



Oak Barrel Platter  
Oak  
23" x 4 1/4" VNPA01  
22-79873-29256



Oak Barrel Platter with Lazy Susan  
Oak  
23" x 4 1/4" VNPA02  
22-45982-52756



# Waterworks Kitchen

Let your sense and sensibility guide you to the fresh and clean scents of Waterworks Kitchen accessories. Liquid hand soap, dish soap, dish and bottle brushes and kitchen candles solidify and simplify careful preparations and entertaining.



## Waterworks Kitchen



Liquid Hand Soap

Tuscan Mint WKHS03  
500 mL 19-41185-04309



Liquid Hand Soap

Tuscan Sage WKHS04  
500 mL 19-58114-27979



Dish Soap

Clementine WKDS01  
500 mL 19-88691-83817



Liquid Hand Soap Refill

Tuscan Mint WKHS05  
1000 mL 19-24436-39957



Liquid Hand Soap Refill

Tuscan Sage WKHS06  
1000 mL 19-43899-88251



Classic Kitchen Candle

Citrus Grove WKCA01  
18 oz 19-78987-79541



# Waterworks Kitchen



Dish Brush

Light Natural  
10 1/2"

WKBR04  
19-37919-55675



Dish Brush

Light Natural  
10 1/2"

WKBR05  
19-12512-55031



Bottle Brush

Light Natural  
12"

WKBR06  
19-22918-71064



Mediterranean Kitchen Sponge

Natural  
One Size

WKSP01  
32-55404-31987



# product details

Family	Primary Material	Method of Construction	Care and Cleaning Summary	Country of Origin
Ancona	Glazed Terra Cotta	Hand glazed	Hand wash in hot water with mild detergent.	Italy
Aragon	Alabaster	Hollowed in open caves in Tuscany. These pieces are one of a kind, hand cut from blocks and then polished and carved by expert artisans	Clean with a mild soap and soft cloth. Do not use any abrasive cleaning products. Do not put in the dishwasher.	Italy
Bella	Glass and Tin	Machine made	Wash with mild detergent and dry thoroughly.	United States
Bistro Cafe Apron	Indigo striped cotton with leather trim	Cut and sewn in the USA	Hand wash with cold water using mild detergent. Do not use warm or hot water. Do not tumble dry.	United States
Bistro Her Apron	Chambray with leather trim	Cut and sewn in the USA	Hand wash with cold water using mild detergent. Do not use warm or hot water. Do not tumble dry.	United States
Bistro His Apron	Waxed canvas with leather trim	Cut and sewn in the USA	Brush off dirt or any abrasive materials from surface. Spot clean using cold water and mild soap with a sponge or brush. Gently massage spot with soap. Rinse and allow to air dry. Do not machine wash or dry clean. Do not use warm or hot water and do not use detergent. Do not tumble dry.	United States
Bourne	Resin	Hand sculpted and then a mold is created, also by hand. Each piece is cast individually in small batches by color.	Hand wash with mild soap or detergent.	United States
Brentwood	White Oak (Chopping Boards); Reclaimed Atlantic City boardwalk hardwood (Salt Cellar); Walnut (Butcher Block)	Hand crafted in the USA	Wash with soap and water. Dry thoroughly. Condition/oil board whenever needed with a food grade mineral oil. Not dishwasher safe.	United States

Family	Primary Material	Method of Construction	Care and Cleaning Summary	Country of Origin
Caffe	Calf skin, drum dyed	The pattern for each piece is cut by hand on a leather substrate. Leather strips are inserted to form the design. The leather is then hand buffed with wax to achieve depth of color. The leather is then lined. The pieces are then treated for water resistance.	For daily care and cleaning wipe with a dry cloth to remove any dust and to prevent dirt from building up. No harsh cleaners or solvents should ever be used as they may abrade the finish. To treat stains or spills, lightly blot a damp cloth with warm water on the stain to lift and remove it. If this does not work blot with a mixture of mild soap and warm water. Blot again with a dry cloth. This should never be done with a heavy hand or in a scrubbing motion. A specialty leather cleaner and conditioner may be used to rejuvenate the leather. Please spot clean before overall use.	United States
Canyon Drive	American Walnut or Ebonized Oak with brass accents	Hand crafted in the USA	Wash with soap and water. Dry thoroughly.	United States
Chamberlain	Pewter, comprised of 95% Tin, 3% Copper and 2% Antimony	Crafted by artisans in Italy by melting, molding, smoothing and polishing the pewter material.	Wash with warm water and mild dish detergent. Dry immediately with a soft dry cloth. Do not put in the dishwasher.	Italy
Chandler	Beeswax	Hand poured in the USA	If needed dust with a soft dry cloth	United States
Clancy	The Brass finish are solid polished brass and the Copper finish are solid brass plated with Copper.	Brass sheets are pressed into shape using a die in the general shape of the item. The pieces are then hand hammered, the edges are trimmed and final polishing is done.	Please note that these pieces are not coated with lacquer which allows the pieces to patina naturally over time. They may tarnish when exposed to the environment but may be easily cleaned with any brass polish or soft cloth. Do not use abrasive cleaning products as they will scratch the finish.	India
Clarion	Glass	Mouth blown	Hand wash with mild soap or detergent. Not recommended for use in the microwave or dishwasher.	Belgium
Cortona	Glazed Terra Cotta	Hand glazed	Hand wash in hot water with mild detergent.	Italy
Dash	Hornbeam end grain wood with Beechwood surrounds and Brass corners	Made in the same way French cabinetry is made.	Clean in warm soapy water. Dry immediately. Oil regularly with food safe oil. Do not submerge or soak in water. Do not put in the dishwasher. Do not store near a heat source.	France
Draper	Carafe is made from glass and the sleeve is made from calfskin leather.	Carafe is made from machine molded glass and the leather is cut, sewn & slid onto the carafe.	The leather sleeve slides off of the carafe for easy care and cleaning. For the carafe, hand was with mild soap and water and for the leather, use a high quality neutral shoe polish.	Italy
Forma	Beeswax	Hand poured in the USA	If needed dust with a soft dry cloth	United States
Fraser	Resin	Each of these resin pieces are handmade and go through a process of being molded, hand sanded and sand blasted. Each piece therefore has individual characteristics and no two are the same.	Hand wash with mild soap or detergent.	Canada



Family	Primary Material	Method of Construction	Care and Cleaning Summary	Country of Origin
Harvest	King Wicker with Leather	Hand woven	Use soft cleaning brush or wash with water and let dry. Keep away from high temperature areas.	Vietnam
Hatchway	100% Linen	Loom woven	Machine wash warm. Tumble dry low. Regular ironing, steam or dry may be performed at high setting.	Lithuania
Hobbs	Hand spun brass is an art form that uses tools to shape the brass as it is spun at very high speeds.	Hand spun brass is an art form that uses tools to shape the brass as it is spun at very high speeds.	Wipe with a damp or dry cloth. Do not use brass cleaner, it will remove the patina finish. Mineral oil can be applied to make the piece look more lustrous. Not safe for food.	Canada
Klei	Clay	Handcrafted pottery. Made in the USA	Before you use each piece, wash it and dry it. When fully dry, oil it with a food safe, unscented clear mineral oil. Do not use olive oil. This will seal the stone and prevent absorption of any liquids that may stain. You can do this process as often as you feel necessary. All pieces are food safe, dishwasher safe and micrwave safe. We do not recommend baking or broiling with them as it may be difficult to clean the unglazed, porous stoneware side of the piece.	United States
Market	Waxed canvas with leather trim	Cut and sewn in the USA	Brush off dirt or any abrasive materials from surface. Spot clean using cold water and mild soap with a sponge or brush. Gently massage spot with soap. Rinse and allow to air dry. Do not machine wash or dry clean. Do not use warm or hot water and do not use detergent. Do not tumble dry.	United States
Marlowe	Resin	Each of these resin pieces are handmade and go through a process of being molded, hand sanded and sand blasted. Each piece therefore has individual characteristics and no two are the same.	Wash with soap and water and then finish with a light coating of mineral oil. Any scratches can be buffed out using a mild abrasive cleaner, pad or light sandpaper. Not dishwasher, oven, freezer or microwave safe.	Canada
Massa	Carrara Marble and Wood Pestle	Carved from the highest grade of Carrara Statuary Marble and hand finished	Hand wash. Dry thoroughly. Food grade sealant is recommended. We recommend Miracle Sealant Porous Plus.	Italy
Matrix	Resin	Hand sculpted and then a mold is created also by hand. Each piece is cast individually in small batches by color.	Hand wash with mild soap or detergent.	United States
Pedra	Soapstone and Copper	The state of Minas Gerais in Brazil is known for extensive soapstone deposits in excellent quality. For hundreds of years soapstone has been used for construction, kitchen counters, ovens and cooking. The soapstone artisan co-op with which we purchase these pieces from reclaims unused pieces of soapstone from various projects and recycles them. Larger pieces are chisled down and then shaped through a sanding process. The copper bands are then cut, polished and applied by hand.	The first time you use your soapstone piece, apply cooking oil to all surface area, heat in a 325 degree oven for 15 minutes and allow to cool before using. For daily care, wash with soap and water. Do not use abrasive cleaning products. Use low heat to start cooking. Avoid thermal shock, this may cause cracks or breakage. Do not use soapstone containers to store food.	Brazil

Family	Primary Material	Method of Construction	Care and Cleaning Summary	Country of Origin
Pesa	100% Ceramic.	Tuscan method for ceramic production. Clay is made, the pieces are molded, air dried, kiln fired, glazed and then a second firing in the kiln to secure the color.	Clean with a soft cloth and mild detergent.	Italy
Poppy	Glass	Mold blown	Clean with a soft cloth and mild detergent. Not dishwasher safe .	Czech Republic
Prescott	Polished Pewter	This collection is hand crafted using the century old traditional manufacturing techniques of spinning, metalsmithing, buffing, polishing, and casting.	Soap and water, cloth dry. Do not dry in a circular motion, dry up and down to maintain shine.	United Kingdom
Preston	Copper and Pewter	Each ice bucket is made from a copper disc which is formed into the bucket shape by spinning - forcing the sheet over a former by hand. This process takes several different stages as the form needs to be taken down gradually and annealed to make the piece malleable before continuing onto the next stage. The handles are made from pewter and solder by hand into position. The final polish is again applied by hand.	Copper polish is safe for the care of the copper and pewter.	United Kingdom
Quarry	Marble with brass feet in nickel	Marble is cut into size. The feet are die cut brass.	Food grade sealant is recommended. We recommend Miracle Sealant Porous Plus.	United States
Secco	100% Linen	Loom woven	Machine wash warm. Non chlorine bleach. Tumble dry low. Warm iron if needed.	Italy
Stringer	Black walnut with food safe tung oil finish	Manufactured by state of the art precision machinery and hand finished.	Hand wash with soap and water. Do not put in the dishwasher or expose to water for extended periods of time. May be wiped periodically with mineral oil.	United States
Tavern	Pewter, comprised of 95% Tin, 3% Copper and 2% Antimony	This collection is hand crafted using the century old traditional manufacturing techniques of spinning, metalsmithing, buffing, polishing, and casting.	Soap and water, cloth dry.	United Kingdom
Treen	Hardwood, teak wood and sago	These are vintage pieces from the early 1900's. Sizes and finishes may vary as no two pieces are exactly alike. All pieces are hand finished with shellac.	Wipe with a damp cloth followed by a soft dry cloth. If using to display fruits or vegetables, wipe with a food safe oil. Over time, each piece with achieve a patina of age and wear, the shellac will dissipate and the natural hardwood will look more rustic.	Indonesia
Tresser	King Wicker	Hand woven	Use a soft cleaning brush or wash with water and allow to dry. Keep away from high temperature areas.	Vietnam
Turner	American Walnut or Ebonized Oak	Hand crafted in the USA	Use a soft cleaning cloth if needed.	United States
Valet	Water Hyacinth	Hand woven	Use soft cleaning brush or wash with water and let dry. Keep away from high temperature areas such as fireplaces. Suitable for indoor or outdoor use.	Vietnam

Family	Primary Material	Method of Construction	Care and Cleaning Summary	Country of Origin
Vintner	Recycled wine barrels	Oak wine casks that held wine for at least four years are reclaimed and the barrel heads are then refinished	Wipe clean, treat with beeswax. Do not wet for any extended period of time.	United States
Waterworks Kitchen Dish Brushes & Bottle Brush	Beechwood	Crafted by artisans in Germany	Rinse with warm water	Germany
Waterworks Kitchen Citrus Grove Classic Kitchen Candle	100% Soy Wax with Cotton wick	Hand crafted in the USA	N/A	United States
Waterworks Kitchen Dish Soap in Clementine	Please reference label for content	N/A	N/A	France
Waterworks Kitchen Liquid Hand Soap in Tuscan Mint and Tuscan Sage	Please reference label for content	N/A	N/A	France
Waterworks Kitchen Mediterranean Sponge	Natural sea sponge	Harvested from the Caribbean and the Mediterranean	N/A	N/A

# pricing

Ancona			us list	uk list	uk list with vat
22-22608-73334	ANBO02	Large Serving Bowl in Green	\$286.00	£204.00	£245.75
22-43055-74549	ANBO02	Large Serving Bowl in Multi Color	\$286.00	£204.00	£245.75
22-51845-57656	ANPA01	Round Serving Platter in Green	\$203.00	£145.00	£174.00
22-79192-17169	ANPA01	Round Serving Platter in Multi Color	\$203.00	£145.00	£174.00
22-42405-69864	ANBW01	Casserole Dish in Green	\$575.00	£410.00	£492.25
22-26927-35616	ANBW01	Casserole Dish in Multi Color	\$575.00	£410.00	£492.25
22-67362-08447	ANPI01	Pitcher in Multi Color	\$140.00	£100.00	£120.00
Aragon					
22-03915-43119	AGTR01	Small Round Tray	\$425.00	£303.25	£364.00
22-62129-82441	AGTR02	Large Round Tray	\$675.00	£481.50	£577.75
Bella					
22-71981-54370	EBCN01	Short Canister	\$75.00	£53.50	£64.00
22-32967-96146	EBCN02	Tall Canister	\$95.00	£68.00	£81.50

Bistro					
33-84207-19796	BSAP01	His Apron	\$185.00	£131.00	£157.00
33-00474-29737	BSAP02	Her Apron	\$132.00	£94.00	£113.00
33-27033-24929	BSAP03	Café Apron	\$120.00	£85.00	£102.00

Bourne					
22-62080-55757	BRBO01	Small Two-Tone Bowl	\$175.00	£124.75	£149.75
22-42008-81898	BRBO02	Medium Two-Tone Bowl	\$225.00	£160.50	£192.75
22-91417-15197	BRBO03	Large Two-Tone Bowl	\$365.00	£260.50	£312.50

Brentwood					
19-49852-05532	BNCT04	Small Serving Board in Walnut	\$150.00	£107.00	£128.50
22-33517-56430	BNCT03	Round Chopping Block in Fumed White Oak	\$450.00	£321.00	£385.25
22-67426-45594	BNCT01	Butcher Block in Walnut	\$950.00	£678.00	£813.25
22-32832-12709	BNSE01	Salt Cellar in Natural	\$85.00	£60.75	£72.75
19-79906-04472	BNRP01	Tapered Rolling Pin in Light Natural	\$100.00	£71.50	£85.50
19-50031-46015	BNRP01	Tapered Rolling Pin in Dark Natural	\$100.00	£71.50	£85.50
19-05871-10409	BNRP02	Tapered Rolling Pin in Light Natural	\$70.00	£50.00	£60.00
19-40857-94983	BNRP02	Tapered Rolling Pin in Dark Natural	\$70.00	£50.00	£60.00
19-71027-50023	BNRP03	Tapered Rolling Pin in Light Natural	\$70.00	£50.00	£60.00
19-20323-06144	BNRP03	Tapered Rolling Pin in Dark Natural	\$70.00	£50.00	£60.00
19-26191-50922	BNRP04	Acorn Rolling Pin in Walnut	\$125.00	£89.00	£107.00
19-45769-76820	BNRP05	Spindle Rolling Pin in Walnut	\$125.00	£89.00	£107.00
19-05651-39562	BNRP06	Scull Rolling Pin in Walnut	\$125.00	£89.00	£107.00
40-91931-25223	BNCC01	Wood Conditioner	\$30.00	£21.90	£26.28

Caffe					
33-92210-28430	CFPM01	Placemat	\$325.00	£238.25	£286.00
33-02301-49054	CFRN01	Table Runner	\$925.00	£678.00	£814.00



Canyon Drive

			us list	uk list	uk list with vat
19-82790-73421	CDPD01	Small Wood Pedestal in Black Walnut	\$490.00	£338.00	£406.00
19-93506-57318	CDPD02	Large Wood Pedestal in Black Walnut	\$550.00	£380.00	£456.00
19-48196-73188	CDTV02	Signature Trivet in Black Walnut	\$345.00	£238.00	£286.00
19-93121-49944	CDTV01	Round Trivet in Ebonized Oak	\$240.00	£166.00	£199.00
19-70118-51280	CDIB01	Ice Bucket in Ebonized Oak	\$650.00	£449.00	£539.00

Chamberlain

22-46744-94588	CBBO01	Bowl	\$285.00	£203.00	£244.00
22-72113-91379	CBBO02	Footed Bowl	\$795.00	£567.00	£680.50
22-52440-21495	CBPI02	Shaped Pitcher	\$675.00	£481.50	£577.75
19-85701-20194	CBIB01	Ice Bucket	\$375.00	£267.50	£321.00
22-86786-81004	CBTR03	Large Rectangular Tray	\$450.00	£321.00	£385.25
22-13856-26303	CBTR04	Small Octagonal Tray	\$224.00	£160.00	£191.75
22-31938-24273	CBTR05	Medium Octagonal Tray	\$239.00	£170.50	£204.50
19-21372-92836	CBHR01	Small Hurricane	\$203.00	£145.00	£173.75
19-42946-17599	CBHR02	Medium Hurricane	\$265.00	£189.00	£226.75

Chandler

19-40135-40985	CCCA01	Square Taper Candle in Bittersweet 12"	\$36.00	£25.00	£30.00
19-57263-38119	CCCA01	Square Taper Candle in Natural 12"	\$36.00	£25.00	£30.00
19-11338-76110	CCCA01	Square Taper Candle in Antique 12"	\$36.00	£25.00	£30.00
19-14904-73615	CCCA02	Square Taper Candle in Cream 16"	\$42.00	£29.00	£35.00
19-08659-10647	CCCA02	Square Taper Candle in Black 16"	\$42.00	£29.00	£35.00
19-39752-20372	CCCA02	Square Taper Candle in Mayflower Blue 16"	\$42.00	£29.00	£35.00
19-80931-92363	CCCA03	Rope Taper Candle in Cream 10"	\$36.00	£25.00	£30.00
19-62554-83258	CCCA03	Rope Taper Candle in Wine 10"	\$36.00	£25.00	£30.00
19-42600-38184	CCCA03	Rope Taper Candle in Mayflower Blue 10"	\$36.00	£25.00	£30.00

Clancy

22-52371-34903	CYBO01	Small Bowl in Brass	\$175.00	£125.00	£150.00
22-75737-39192	CYBO01	Small Bowl in Copper	\$175.00	£125.00	£150.00
22-29602-98774	CYBO02	Medium Bowl in Brass	\$295.00	£210.00	£252.50
22-84481-65319	CYBO02	Medium Bowl in Copper	\$295.00	£210.00	£252.50
22-99160-30900	CYBO03	Large Bowl in Brass	\$435.00	£310.00	£372.50
22-15042-57253	CYBO03	Large Bowl in Copper	\$435.00	£310.00	£372.50

Clarion

22-34685-81617	CNHR04	Votive Holder in Clear	\$24.00	£17.00	£20.50
22-92551-12855	CNHR04	Votive Holder in Smoke	\$24.00	£17.00	£20.50
22-54246-22434	CNHR02	Extra Small Hurricane in Clear	\$78.00	£55.50	£66.75
22-46935-35837	CNHR02	Extra Small Hurricane in Smoke	\$109.00	£77.75	£93.25
22-97966-69968	CNHR03	Small Hurricane in Clear	\$130.00	£93.00	£111.60
22-80091-42721	CNHR03	Small Hurricane in Smoke	\$172.00	£122.75	£147.25
22-88224-80855	CNHR01	Large Hurricane in Clear	\$203.00	£145.00	£173.75
22-93622-16221	CNHR01	Large Hurricane in Smoke	\$234.00	£167.00	£200.25
19-87879-40579	CNCA02	Extra Small Candle	\$10.00	£7.00	£8.50
19-07316-64895	CNCA03	Small Candle	\$10.00	£7.00	£8.50
19-05915-20199	CNCA01	Large Candle	\$10.00	£7.00	£8.50
22-80469-37769	CNCF02	Large Carafe in Clear	\$57.00	£40.75	£49.00

Cortona

22-69190-42518	CRBO02	Medium Serving Bowl	\$125.00	£89.00	£107.00
22-61761-31186	CRBO03	Large Serving Bowl	\$166.00	£118.50	£142.00
22-81110-75366	CRPA02	Oval Platter	\$403.00	£287.50	£345.00
22-62769-55018	CRPI01	Small Pitcher	\$109.00	£77.75	£93.50

Dash

22-37842-45005	DSCT01	Cutting Board in Brass	\$357.00	£254.75	£305.65
22-85781-89567	DSCT01	Cutting Board in Stainless Steel	\$357.00	£254.75	£305.65

Draper

			us list	uk list	uk list with vat
22-61634-34281	DPCF01	Small Glass & Leather Water Carafe	\$135.00	£96.50	£115.50
22-86833-19341	DPCF02	Large Glass & Leather Water Carafe	\$150.00	£107.00	£128.50

Forma

19-17895-30293	FXCA01	Shaped Short Pillar in Natural	\$40.00	£28.00	£34.00
19-32131-48294	FXCA01	Shaped Short Pillar in Cream	\$40.00	£28.00	£34.00
19-68900-42154	FXCA02	Shaped Medium Pillar in Gray	\$40.00	£28.00	£34.00
19-43979-47492	FXCA02	Shaped Medium Pillar in Black	\$40.00	£28.00	£34.00
19-50812-69194	FXCA03	Shaped Tall Pillar in Natural	\$40.00	£28.00	£34.00
19-17463-94386	FXCA03	Shaped Tall Pillar in Cream	\$40.00	£28.00	£34.00

Fraser

22-07603-12385	FABO01	Bowl with Ink	\$495.00	£353.00	£423.75
22-68585-76785	FATRO1	Tray with Ink	\$495.00	£353.00	£423.75

Harvest

19-76440-85668	HSBA01	Medium Basket	\$130.00	£92.75	£111.25
19-05125-56537	HSBA02	Large Basket	\$156.00	£111.50	£133.50

Hatchway

33-96938-43617	HCKT01	Kitchen Towel in White	\$22.00	£15.20	£18.24
33-30011-08991	HCKT01	Kitchen Towel in Silver	\$22.00	£15.20	£18.24
33-25466-71239	HCKT01	Kitchen Towel in Aloe Green	\$22.00	£15.20	£18.24
33-65046-99468	HCKT01	Kitchen Towel in Ice Blue	\$22.00	£15.20	£18.24

Hobbs

22-27115-80430	HBBO01	Small Bowl	\$835.00	£595.50	£714.75
22-75740-78814	HBBO02	Large Bowl	\$1050.00	£749.00	£898.75
22-00802-08671	HBTR01	Round Tray	\$750.00	£535.00	£642.00

Klei

19-76760-86819	KLCN01	Small Canister	\$225.00	£155.00	£186.00
19-41251-82231	KLCN02	Medium Canister	\$325.00	£224.00	£269.00
19-35192-87376	KLCN03	Large Canister	\$495.00	£342.00	£410.00
19-71445-56112	KLTR01	Medium Round Flat Tray	\$120.00	£83.00	£100.00
19-68118-28664	KLSW01	Sugar & Creamer Set with Tray	\$160.00	£111.00	£133.00

Market

19-38595-46779	MKTT01	Tote	\$98.00	£70.00	£84.00
19-53177-75154	MKTT02	Wine Tote	\$74.00	£53.00	£64.00

Marlowe

22-43283-05845	METR02	Low Round Tray	\$395.00	£281.75	£338.25
22-63764-44901	METR03	Round Tray	\$450.00	£321.00	£385.25

Massa

22-90795-46993	MMMP01	Carved Mortar & Pestle	\$670.00	£478.00	£573.50
22-37624-43293	MMMP02	Round Mortar & Pestle	\$500.00	£356.75	£428.00

Matrix

22-86739-68248	MUBO01	Small Bowl	\$195.00	£139.00	£167.00
22-77696-69368	MUBO03	Large Bowl	\$295.00	£210.50	£252.50
22-92370-25483	MUBO04	Set of Three Bowls & Tray	\$235.00	£167.75	£201.00

Pedra

19-83349-58549	PABW01	Small Round Grill	\$90.00	£62.00	£74.00
19-41613-19168	PABW02	Large Round Grill	\$135.00	£93.00	£112.00

Pesa			us list	uk list	uk list with vat
22-46619-14470	PSBO01	Small Bowl with Spout	\$66.00	£47.00	£56.50
22-38005-96387	PSBO03	Large Bowl with Spout	\$116.00	£82.75	£99.25
22-38275-93596	PECA04	Utensil Canister	\$65.00	£39.25	£47.00
22-55331-52425	PECA01	Small Canister	\$95.00	£67.75	£81.25
22-46652-64614	PECA02	Medium Canister	\$110.00	£78.50	£94.25
22-76647-90975	PECA03	Large Canister	\$125.00	£89.25	£107.00
22-17931-39595	PEBO04	Nested Mixing Bowls	\$175.00	£124.75	£149.75

### Poppy

19-98152-54129	PYJA01	Small Apothecary Jar in Morel	\$325.00	£224.00	£269.00
19-55732-92606	PYJA01	Small Apothecary Jar in Papaya	\$325.00	£224.00	£269.00
19-73498-13655	PYJA02	Large Apothecary Jar in Morel	\$400.00	£276.00	£331.00
19-97731-49867	PYJA02	Large Apothecary Jar in Papaya	\$400.00	£276.00	£331.00

### Prescott

22-56155-42402	PCTR01	Tray with Rattan Handles	\$294.00	£209.75	£251.50
22-02419-36096	PCPI01	Small Pitcher with Rattan Handles	\$205.00	£146.25	£175.50
22-28436-47538	PCPI03	Large Pitcher with Rattan Handles	\$295.00	£210.50	£252.50
22-95619-32273	PCWR01	Small Wine Coaster	\$98.00	£70.00	£83.75
22-60309-39896	PCWR02	Large Wine Coaster	\$124.00	£88.50	£106.25

### Preston

19-17096-24605	PPIB01	Ice Bucket with Pewter Handles	\$375.00	£267.50	£321.00
----------------	--------	--------------------------------	----------	---------	---------

### Quarry

22-80755-55126	QRPA02	Small Serving Board	\$205.00	£146.25	£175.50
22-07156-35827	QRPA01	Large Serving Board	\$295.00	£210.50	£252.50

### Secco

33-25816-08851	SEKT02	Kitchen Towel in Multi Green	\$25.00	£18.00	£22.00
33-70234-63921	SEKT02	Kitchen Towel in Multi Red	\$25.00	£18.00	£22.00
33-13579-06947	SEKT01	Kitchen Towel in Cream / Green	\$22.00	£16.00	£19.00
33-64840-32882	SEKT01	Kitchen Towel in Cream / Red	\$22.00	£16.00	£19.00
33-53915-33424	SEKT01	Kitchen Towel in Cream / Blue	\$22.00	£16.00	£19.00

### Stringer

22-76127-93727	SGPA01	Platter in Cosmos	\$175.00	£124.75	£149.75
22-22055-41559	SGPA01	Platter in Midnight	\$175.00	£124.75	£149.75
22-18425-87997	SGCT01	Small Cutting Board in Cosmos	\$94.00	£67.00	£80.50
22-09492-07869	SGCT01	Small Cutting Board in Midnight	\$94.00	£67.00	£80.50
22-66419-76243	SGCT02	Large Cutting Board in Cosmos	\$130.00	£92.75	£111.25
22-63752-03386	SGCT02	Large Cutting Board in Midnight	\$130.00	£92.75	£111.25

### Tavern

19-91122-40567	TVBE01	Cocktail Shaker	\$95.00	£66.00	£79.00
19-32868-93712	TVBE02	Double Jigger	\$55.00	£38.00	£46.00

### Treen

22-96636-28015	TNTR01	Footed Tray	\$725.00	£501.00	£601.00
22-87544-24034	TNTR02	Medium Round Tray	\$450.00	£311.00	£373.00
22-38937-22812	TNBO01	Bowl	\$500.00	£345.00	£414.00
22-11783-86786	TNBO02	Bowl	\$675.00	£466.00	£559.00
22-66982-35488	TNBO03	Bowl	\$525.00	£362.00	£435.00
22-42546-70849	TNBO04	Bowl	\$995.00	£687.00	£824.00
22-14615-30508	TNBO05	Bowl	\$895.00	£618.00	£741.00

### Tressor

			us list	uk list	uk list with vat
19-38196-74205	TSBA01	Small Round Tray	\$65.00	£45.00	£54.00
19-33367-44961	TSBA02	Medium Round Tray	\$85.00	£59.00	£71.00

### Turner

19-16110-45244	TUCK01	Small Turned Candlestick in Black Walnut	\$175.00	£121.00	£145.00
19-35803-71049	TUCK01	Small Turned Candlestick in Ebonized Oak	\$185.00	£128.00	£154.00
19-45902-93162	TUCK02	Medium Turned Candlestick in Black Walnut	\$185.00	£128.00	£154.00
19-93456-89592	TUCK02	Medium Turned Candlestick in Ebonized Oak	\$195.00	£135.00	£162.00
19-58981-58076	TUCK03	Large Turned Candlestick in Black Walnut	\$205.00	£142.00	£170.00
19-19012-32213	TUCK03	Large Turned Candlestick in Ebonized Oak	\$215.00	£148.00	£178.00

### Valet

22-81127-00793	VLTR01	Medium Round Tray	\$36.00	£25.75	£30.75
22-48722-27353	VLTR03	Extra Round Large Tray	\$57.00	£40.75	£48.75

### Vintner

22-79873-29256	VNPA01	Oak Barrel Platter	\$625.00	£445.75	£535.00
22-45982-52756	VNPA02	Oak Barrel Platter with Lazy Susan	\$650.00	£463.75	£556.50

### Waterworks Kitchen

19-41185-04309	WKHS03	Liquid Hand Soap in Tuscan Mint	\$32.00	£22.00	£27.00
19-58114-27979	WKHS04	Liquid Hand Soap in Tuscan Sage	\$32.00	£22.00	£27.00
19-24436-39957	WKHS05	Liquid Hand Soap Refill in Tuscan Mint	\$48.00	£33.00	£40.00
19-43899-88251	WKHS06	Liquid Hand Soap Refill in Tuscan Sage	\$48.00	£33.00	£40.00
19-88691-83817	WKDS01	Dish Soap in Clementine	\$28.00	£19.00	£23.00
19-78987-79541	WKCA01	Classic Kitchen Candle in Citrus Grove	\$68.00	£47.00	£56.00
19-37919-55675	WKBR04	Dish Brush	\$22.00	£15.00	£18.00
19-12512-55031	WKBR05	Dish Brush	\$22.00	£15.00	£18.00
19-22918-71064	WKBR06	Bottle Brush	\$15.00	£10.00	£12.00
32-55404-31987	WKSP01	Mediterranean Kitchen Sponge	\$16.00	£11.00	£13.00



