



Aqualinea

WATERWORKS

Palette



Amarello (M)



Arrowroot (M)



Avocado (M)



Bardiglio Medium (M)



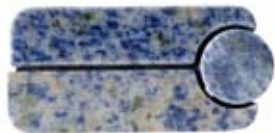
Bianco Carrara (M)



Bianco Feather (M)



Bianco Perlino (M)



Blue Bahia (M)



Blue Macauba Select (M)



Blue Celeste (M)



Blue Macauba Regular (M)



Botticino (M)



Breccia Pernice (M)



Calacatta Oro (M)



Cipollino (M)



Coffee Brown (M)



Crema Marfil (M)



Crema Valencia (M)



Colour Grey (M)



Danby (M)



Dark Bardiglio (M)



Dark Emperador (M)



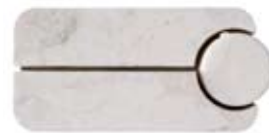
Dark Green Onyx (O)



Dark Onyx (O)



Dynasty Mist (M)



French Vanilla (M)



Giallo Reale (M)



Desert Pink (M)



Gold Brown (M)



Gold Travertine (T)



Honey Onyx (O)



Jerusalem Bone (L)



Jerusalem Gold (L)



Lagos Blue (L)



Lagos Gold (L)



Light Emperador (M)

Palette



Light Green Onyx (O)



Rosso Peach (M)



Travertine Chiaro (T)



Violet Leopard (M)



Milky Pink (M)



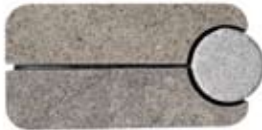
Rosso Alicante (M)



Travertine Noce (T)



Wavy Green (M)



Montevideo (L)



Rosso Laguna (M)



Travertine Rosso (T)



White Limestone (L)



Morning Rose (M)



Rosso Verona (M)



Triana (M)



White Onyx (O)



Nero Marquina (M)



Snow White (M)



Verde Dark (M)



White Thassos (M)



Nero Panthera (M)



Statuario (M)



Verde Laguna (M)



Willow (M)



Piedra Azul (M)



Temple Grey (M)



Verde Lotus (M)



Yellow Travertine (T)



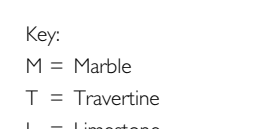
Portoro Gold (M)



Timber Brown (M)



Verde Medium (M)



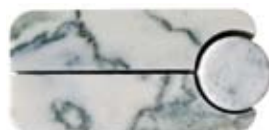
Key:  
M = Marble  
T = Travertine  
L = Limestone



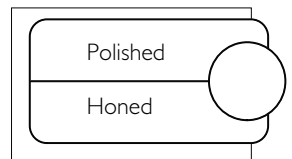
Rosa Portogallo (M)



Timber Yellow (M)

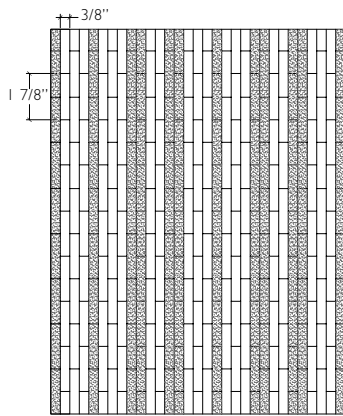


Verde Serpe (M)



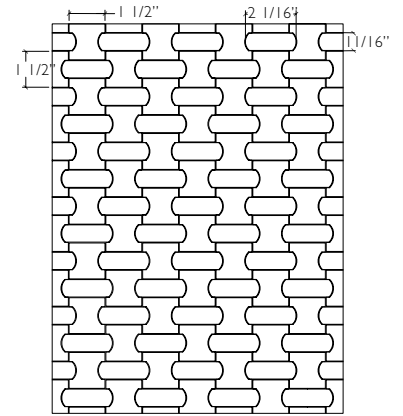
Field

Strata



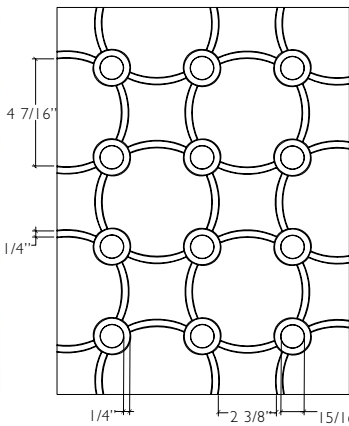
AQMOS6

Spool



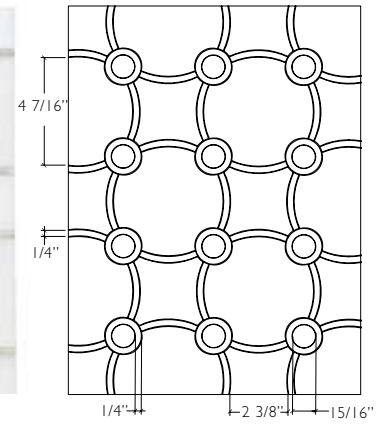
AQMOSO

Carousel



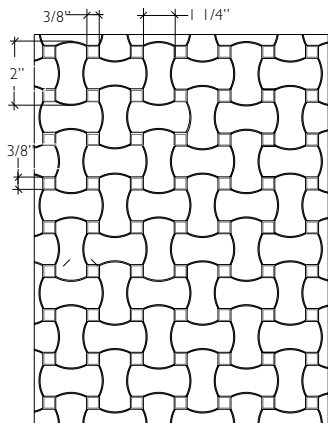
AQMOCI

Carousel



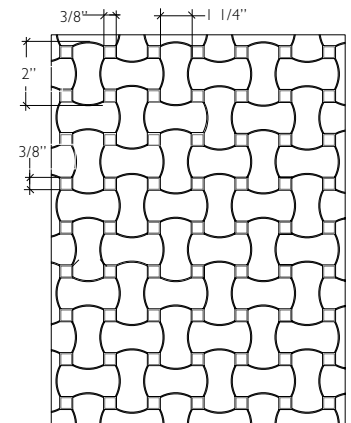
AQMOCI

Lacrosse



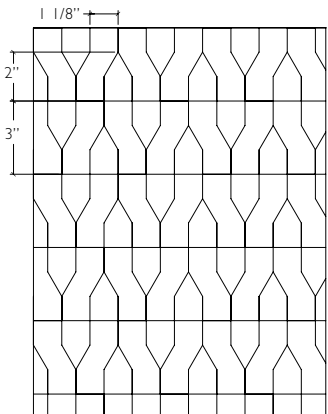
AQMOLA

Lacrosse



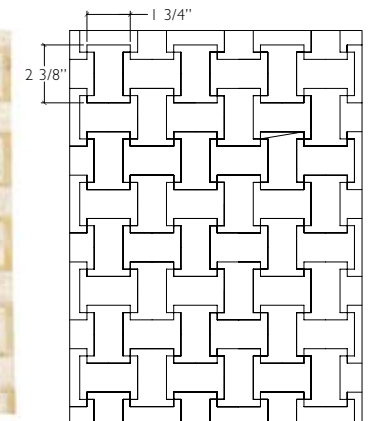
AQMOLA

Tango



AQMOT6

Intraloc A

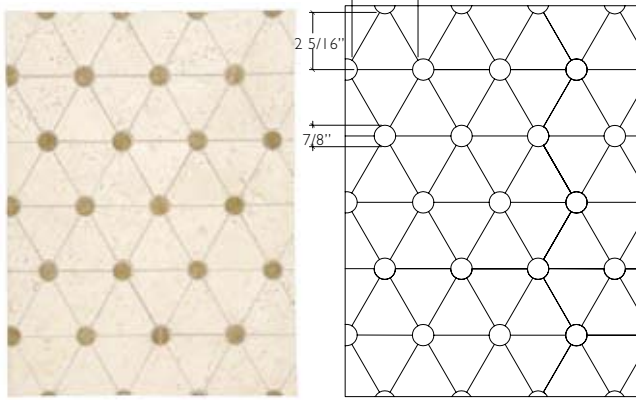


AQMOII

Stone mosaics available in most palette combinations. See your sales associate for details.

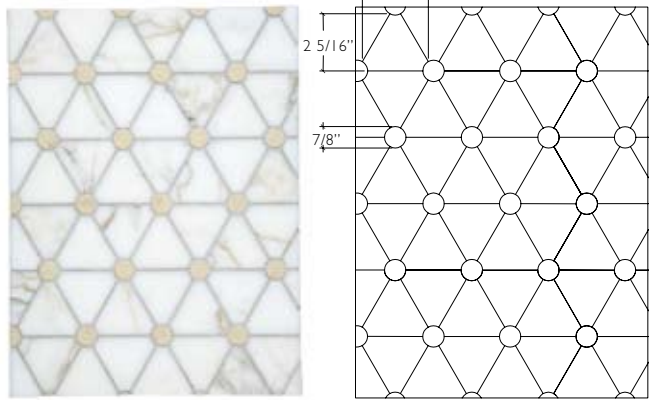
Field

Parasol A



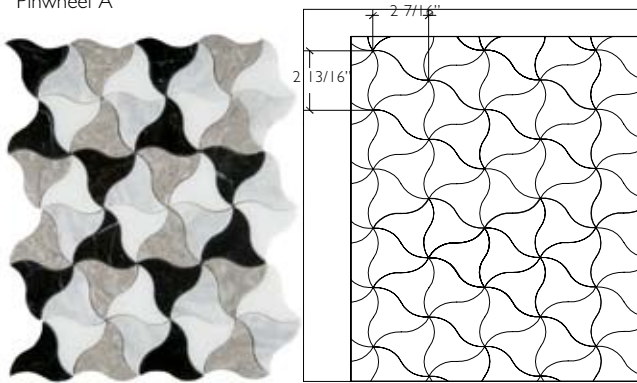
AQMOPI

Parasol A



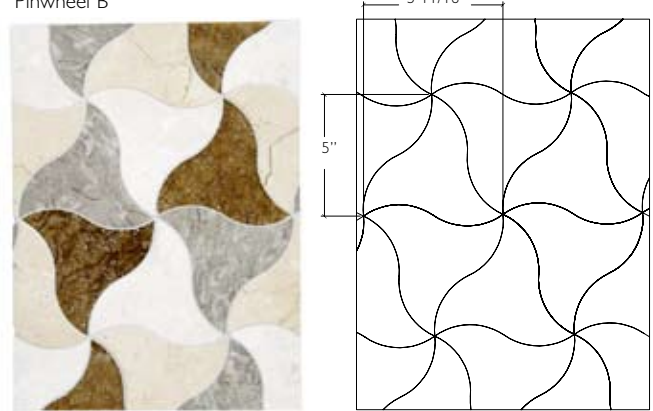
AQMOPI

Pinwheel A



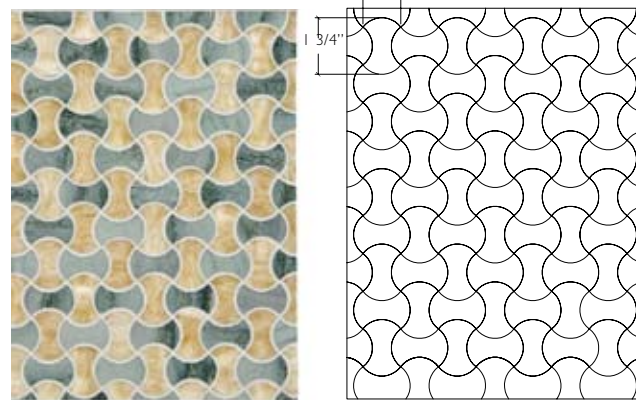
AQMOP3

Pinwheel B



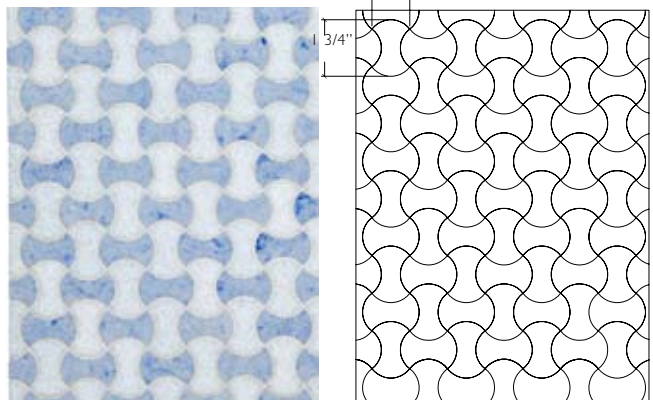
AQMOP4

Wavy



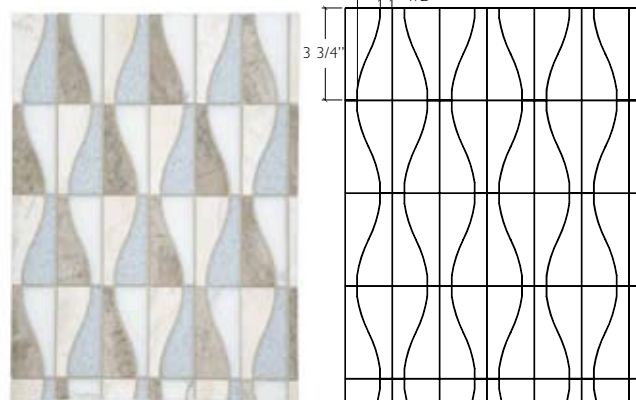
AQMOWV

Wavy



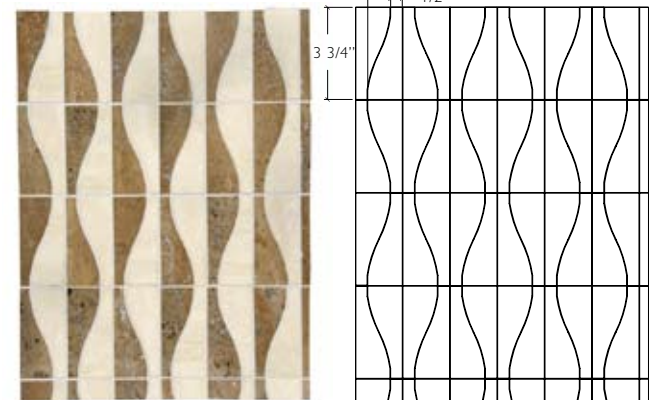
AQMOWV

Sine Wave



AQMOSW

Sine Wave

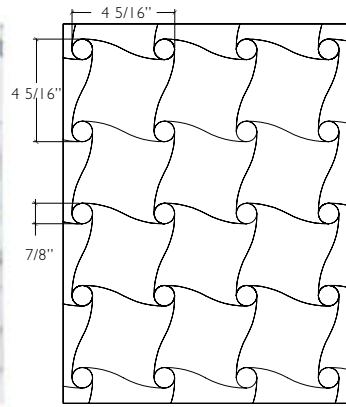


AQMOSW

Stone mosaics available in most palette combinations. See your sales associate for details.

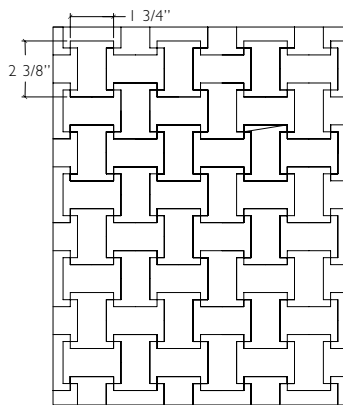
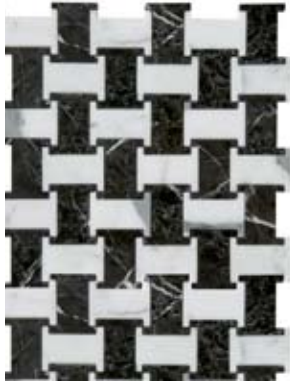
Field

Sachet A



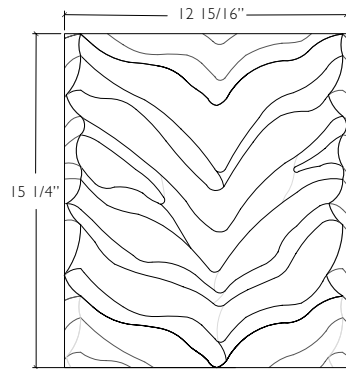
AQMOS1

Intraloc A



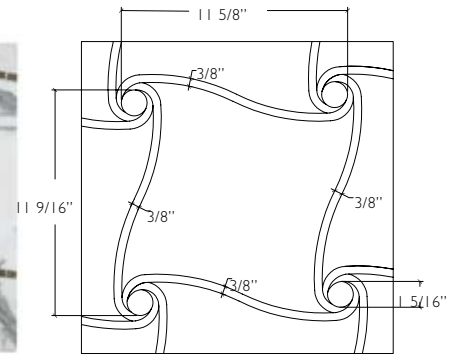
AQMO11

Safari



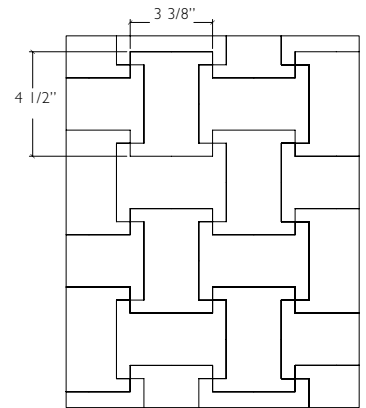
AQMOS3

Sachet B



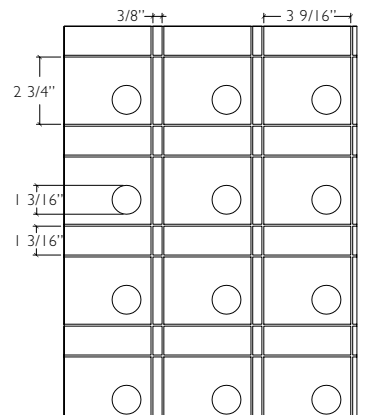
AQMOS2

Intraloc B



AQMO12

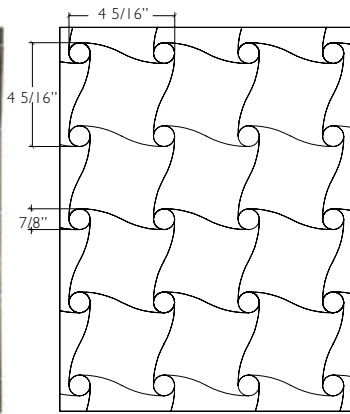
Park Place



AQMOPP

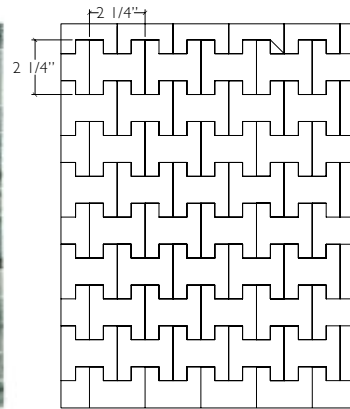
Field

Sachet A



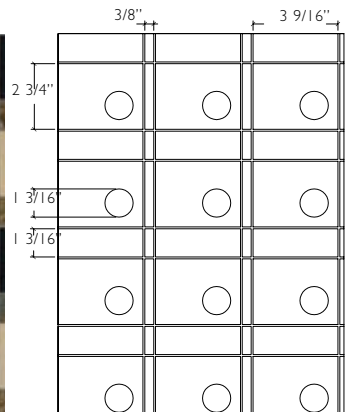
AQMOS1

Sidestep A



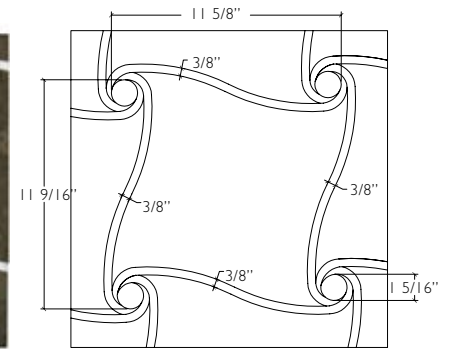
AQMOS4

Park Place



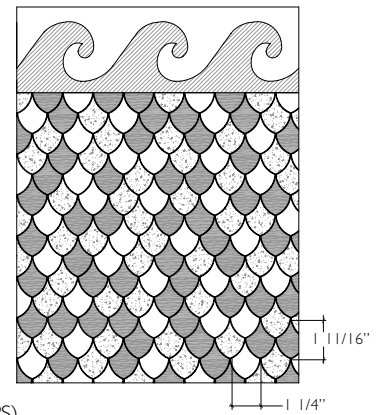
AQMOPP

Sachet B



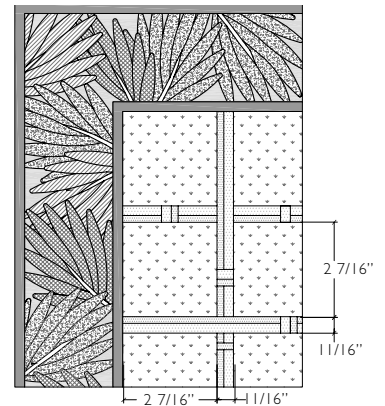
AQMOS2

Pisces



AQMOPS shown with border (AQBOPS)

Bamboo A



AQMOB2 shown with continuous corner (AQCCBM)

Borders and Corners

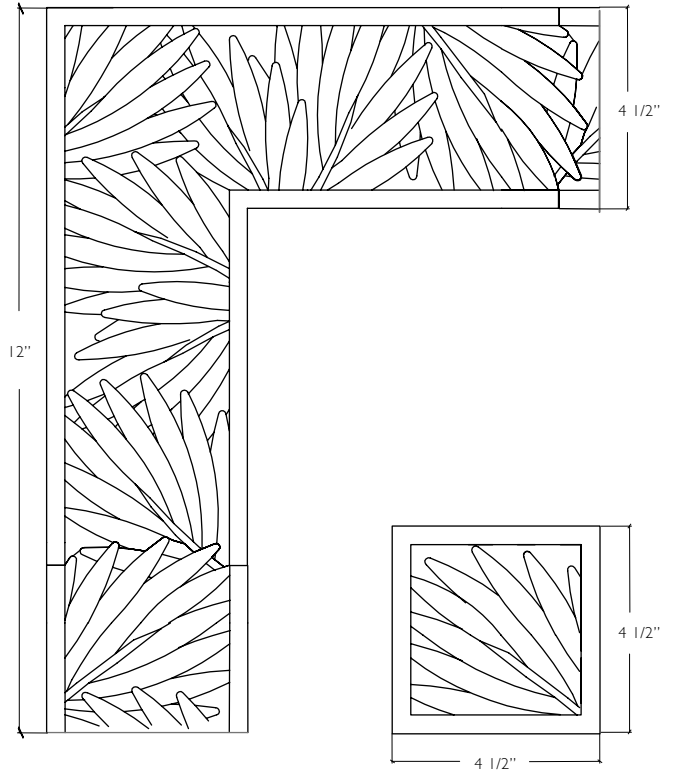
Bamboo



Bamboo Continuous Corner  
AQCCBM

Bamboo Block Corner  
AQBCBM

Bamboo Border (AQBOBM) not shown



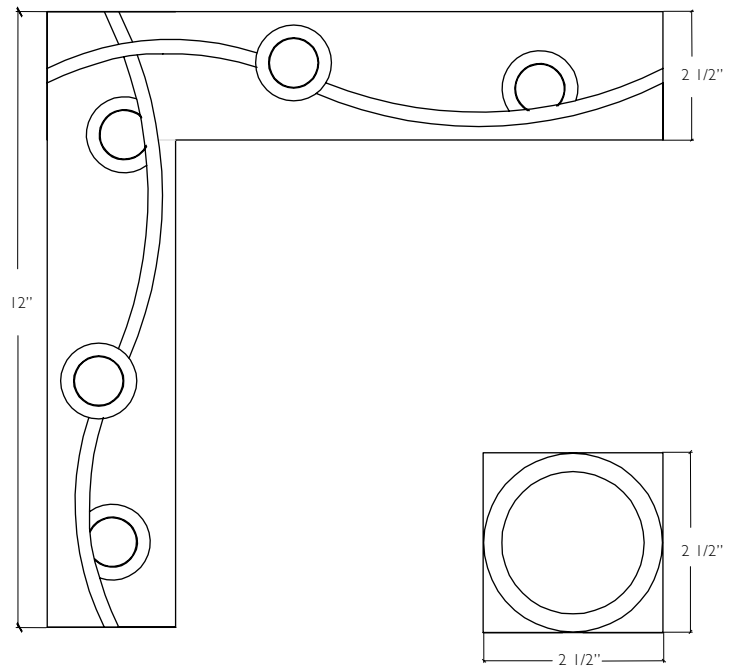
Carousel



Carousel Continuous Corner  
AQCCR

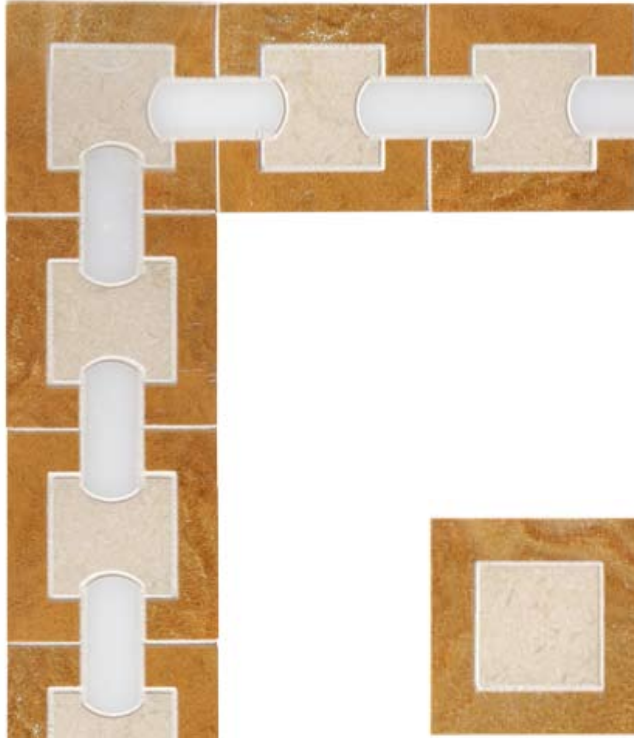
Carousel Block Corner  
AQBCCR

Carousel Border (AQBOCR) not shown





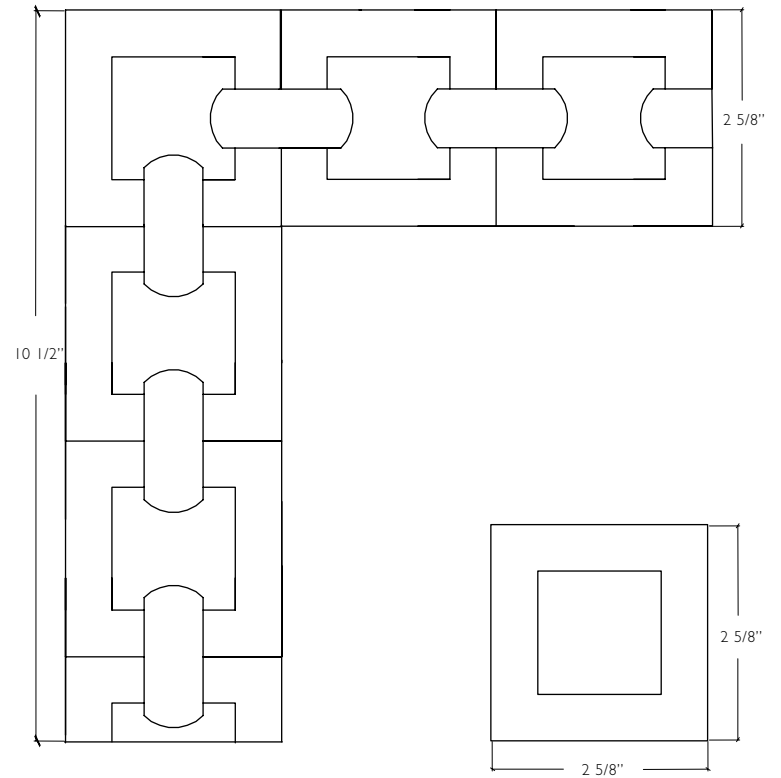
Spool



Spool Continuous Corner  
AQCCSP

Spool Block Corner  
AQBCSP

Spool Border (AQBOSP) not shown



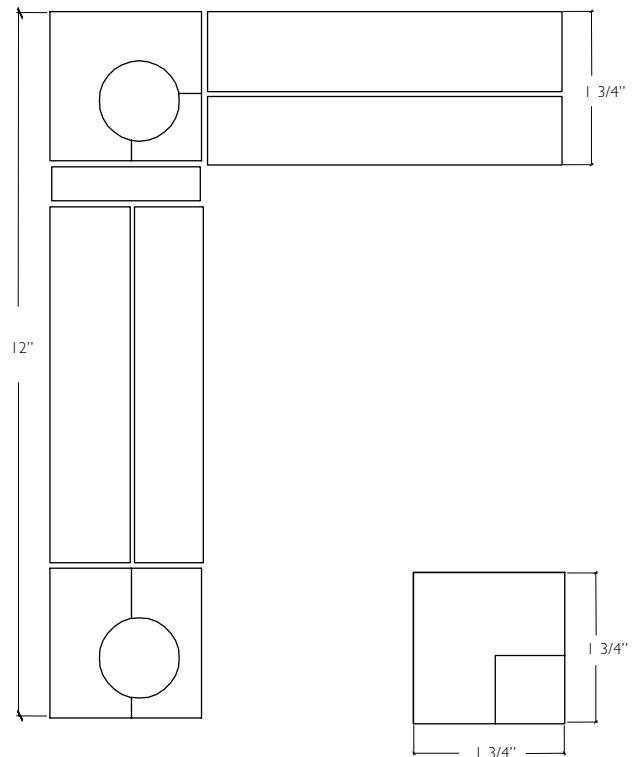
Park Place



Park Place Continuous Corner  
AQCCPP

Park Place Block Corner  
AQBCPP

Park Place Border (AQBOPP) not shown



Stone mosaics available in most palette combinations. See your sales associate for details.

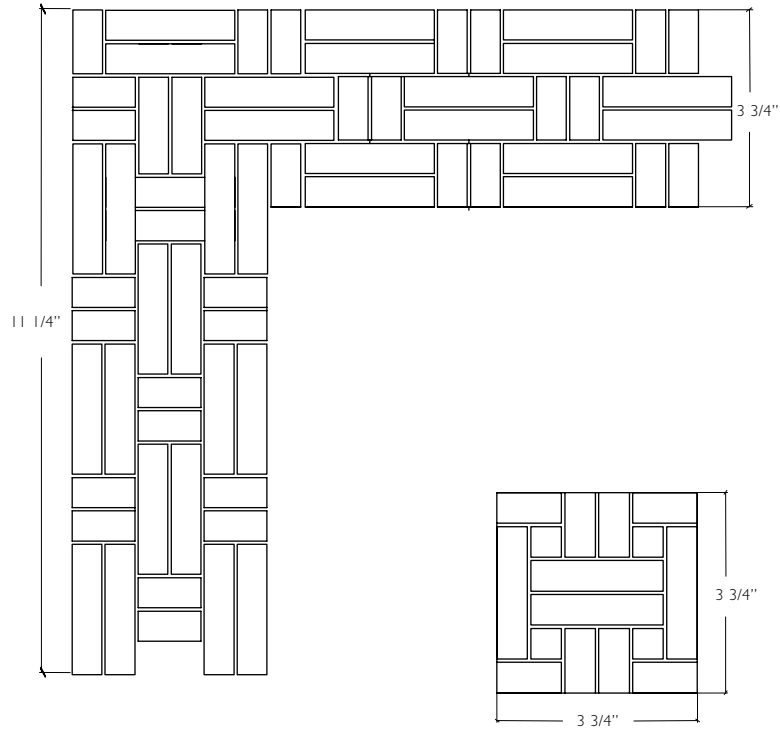
Naples



Naples Continuous Corner  
AQCCNP

Naples Block Corner  
AQBCNP

Naples Border (AQBONP) not shown



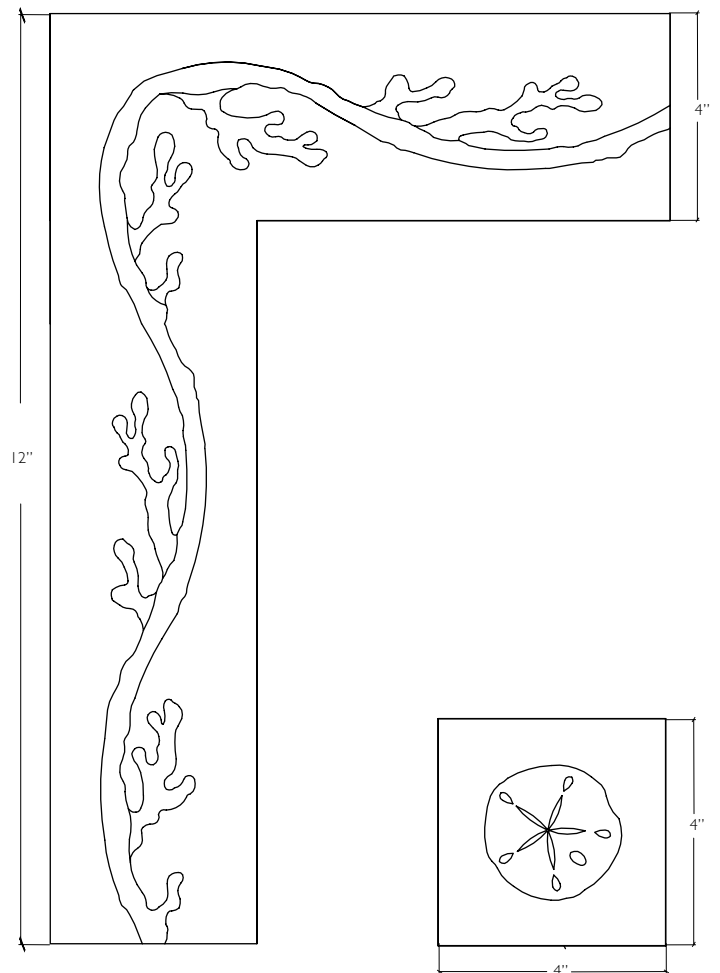
Wavy



Wavy Continuous Corner  
AQCCWY

Wavy Block Corner  
AQBCNP

Wavy Border (AQBOWY) not shown



Stone mosaics available in most palette combinations. See your sales associate for details.

### TERMS AND CONDITIONS ORDERING

Please review your order thoroughly for accuracy and quantities. We request that all quantities be checked by an installer or contractor. Although your Waterworks sales associate may have assisted in preparation of quantities or details of custom specifications, we cannot be held responsible for discrepancies in quantities and custom specifications. Any additions or changes to the order could delay the delivery date and may result in color or production lot variation.

### PAYMENT

We accept MasterCard, Visa, American Express, cash, personal, bank and traveler checks, money orders, wire transfers and Waterworks gift cards. Any order less than \$1000 must be paid in full at time of order placement. All orders over \$1000 require a 50% deposit of order total including freight and taxes. This deposit is non-refundable for tile, stone, and made-to-order products. The deposit must be maintained at all times and the balance due must be paid prior to shipment. All freight charges are invoiced with the last shipment. We must collect sales tax for orders being shipped to states in which we have stores or representation. Resale certificates must be supplied at the time of order placement.

Product and freight pricing are subject to change without notice. Product pricing on quotations is honored for 60 days from the date of quote entry. Freight charges on quotes and orders are estimations and subject to change based on current market conditions at time of shipment. Merchandise not shipped within a reasonable time period is subject to a warehouse storage fee.

### DELIVERIES AND SHIPPING

Our Client Services team will coordinate nationwide deliveries based on customer requests and determine the most effective method of transportation. For orders requiring delivery by a common carrier, the carrier will call 24 hours in advance to confirm delivery. All common carrier deliveries are curbside unless otherwise specified on order by client. It is the client's responsibility to accept delivery and verify quantities received.

All of our shipments are carefully inspected prior to shipment and packaged to ensure that they leave our warehouses in perfect condition. Any visible damage or shortage upon delivery must be noted on the freight carrier bill. In the event that product is damaged during shipment, a freight claim must be reported to our Client Services department within 48 hours. Please follow the freight claim instructions included with the shipment for proper credit. In the unlikely event of a delivery being delayed, postponed or incorrect we do not accept responsibility for lost working time. Always inspect your merchandise before installation as installation constitutes acceptance.

### RETURNS

Returns will be accepted within 60 days of receipt of the order. The product must be in its original condition and packaging. All tile, stone and made-to-order products are non-cancelable and non-returnable. All returns will be charged a minimum of a 20% return process fee. The return process charge and all applicable shipping charges will be deducted from the client refund amount. Returns must be requested through our Returns Department at 800 927 2120.

Returns will be credited from the corporate office to the original billed party via the same method of payment as used in the original transaction. Return credit will only be issued based upon receipt and inspection of returned product.

Merchandise must be inspected at the time of receipt for color, shade, finish or defects prior to installation. Installed merchandise of any kind is non-returnable. Use constitutes acceptance. We do not accept responsibility or liability for installation, sealing or refinishing. Any damage or shortage must be reported within 48 hours of receipt of product.

Crazing, shade and size variations are inherent characteristics of ceramic, tile and stone. Actual tile, stone, furniture and all wood products received may differ in shading and size from samples. Color and surface imperfections are natural characteristics of these types of products.

### USE

This material is suitable for walls, countertops, backsplashes and fireplaces.

### CARE AND CLEANING

To derive long lasting pleasure from your product and to preserve its attractive appearance, please do not use scouring agents, abrasive sponges, hydrochloric acid, vinegar (acetic acid) cleaners, ammonia or metal silicates. A proper maintenance program is critical to ultimate customer satisfaction.

Regular cleaning with a mild, non-abrasive pH neutral cleanser is recommended.

### VARIATION AND CRAZING

This product is subject to variation due to the nature of the raw materials and production methods used. Actual tile received may differ from samples. It is the purchaser's responsibility to inspect tile prior to installation. Please be aware that use constitutes acceptance.

### INSTALLATION

Waterworks recommends using a licensed and experienced tile setter for all tile installations. Inspection of each piece is recommended when the order arrives.

Waterworks recommends using the tightest possible grout joints and offsetting the joints between field and trim rows. All tiles should be laid out prior to setting to allow for blending of the color range. Grout joints should be sealed with a penetrating sealer to accommodate ease of maintenance. Tiles with a crackle surface for installation in damp or wet areas, should be sealed to aid in the prevention of moisture penetrating the glazed surface. This process should be repeated from time to time in accordance with the sealer manufacturer's guidelines.

### ORDERING

Waterworks recommends ordering extra tile with your order; additions at a later date may not match.

Production time for all custom orders is 6 – 8 weeks

### SHIPPING AND FREIGHT

Freight Charges are additional to the price of the material. Waterworks tracks all orders through delivery and arranges for shipment using the mode of transportation best suited to the size of the shipment and destination.

### RETURNS

Special order tile is not returnable. Claims for product defects, shipping damage, or shortages must be made within 48 hours of receipt. Please inspect your shipment immediately on receipt. Installation of material constitutes acceptance.

**All dimensions in this catalog are nominal.**

### CONTACT US

Waterworks  
60 Backus Avenue  
Danbury CT 06810  
For Catalog orders please call 800 899 6757, Monday through Friday

Visit any one of our stores or [waterworks.com](http://waterworks.com)  
For information on your order or technical assistance,  
please call 800 927 2120 Monday through Friday  
For Commercial sales, please call 800 927 2120 Monday through Friday

## CONTACT

For further information,  
please contact a Waterworks  
Sales Consultant at a nearby  
location or call us at  
800.899.6757

For a Waterworks sales  
consultant outside of our  
markets, international  
inquiries, or direct sales  
please call our catalog team  
at 800.899.6757 or our UK  
showroom at  
+44 (0)207.384.4000

For an online catalog  
please go to [waterworks.com](http://waterworks.com)

## SHOWROOMS

ATLANTA  
1 West Paces Ferry Rd  
Atlanta, GA 30305  
P 404.266.1080 F 404.266.9055

BOSTON  
One Design Center Place, Suite 147  
Boston, MA 02210  
P 617.951.2496 F 617.951.2498

CHICAGO  
222 Merchandise Mart Plaza, Suite 136  
Chicago, IL 60654  
P 312.527.4668 F 312.527.1490

DALLAS  
1525 Hi Line Drive, Suite A  
Dallas, TX 75207  
P 214.749.0465 F 214.749.0481

DENVER  
601 S. Broadway, Suite X  
Denver, CO 80209  
P 303.282.6800 F 303.282.4311

GEORGETOWN  
3314 M Street NW  
Washington, DC 20007  
P 202.333.7180 F 202.333.7207

GREENWICH  
23 West Putnam Avenue  
Greenwich, CT 06830  
P 203.869.7766 F 203.869.7629

LONDON  
579-581 King's Road  
London, England  
SW6 2EH  
P +44 (0)207.384.4000

LOS ANGELES  
8431 Melrose Place  
Los Angeles, CA 90069  
P 310.289.5211 F 310.289.1028

MIAMI  
167 NE 39th Street  
Miami, FL 33137  
P 305.573.7593 F 305.573.7460

NYC 58TH STREET  
215 East 58th Street  
New York, NY 10022  
P 212.371.9266 F 212.371.9263

NYC FLATIRON  
7 East 20th Street  
New York, NY 10003  
P 212.254.6025 F 212.254.6069

NYC KITCHEN  
979 3rd Avenue, Suite 134  
(Entrance on 59th Street)  
New York, NY 10022  
P 212.371.9266 F 212.371.9263

SAN FRANCISCO  
235 Kansas Street  
San Francisco, CA 94103  
P 415.431.7160 F 415.431.7387

SCOTTSDALE  
4234 N. Craftsman Court, Suite 2  
Scottsdale, AZ 85251  
P 480.946.2550 F 480.946.2584

## BOUTIQUE PARTNERS

BIRMINGHAM, AL  
LA JOLLA, CA  
JACKSONVILLE, FL  
JUPITER, FL  
TAMPA, FL  
WEST PALM BEACH, FL  
KETCHUM, ID  
LEXINGTON, KY  
LOUISVILLE, KY  
BLOOMFIELD HILLS, MI  
HARBOR SPRINGS, MI  
MINNEAPOLIS, MN  
ST. LOUIS, MO  
CHARLOTTE, NC  
RALEIGH, NC  
COLUMBUS, OH  
CLEVELAND, OH  
OKLAHOMA CITY, OK  
PORTLAND, OR  
CHARLESTON, SC  
HARDEEVILLE, SC  
AUSTIN, TX  
SAN ANTONIO, TX  
SALT LAKE CITY, UT  
BELLEVUE, WA  
JACKSON, WY  
CALGARY, AB, CANADA  
TORONTO, ON, CANADA  
VANCOUVER, BC, CANADA  
MONTREAL, QC, CANADA  
MUNICH, DE, GERMANY

## COMMERCIAL & HOSPITALITY

For commercial interests please contact:  
Commercial and Hospitality  
60 Backus Avenue  
Danbury, CT 06810  
P 203.546.6196 F 203.546.6001  
[waterworks.com/commercial](http://waterworks.com/commercial)

Waterworks is a registered trademark of Waterworks  
Operating Company, LLC.

*While Waterworks uses reasonable efforts to include accurate  
and up-to-date information and photographs in the catalog and  
on the website, Waterworks makes no warranties or  
representations as to the accuracy of this information and these  
photographs. Waterworks assumes no liability or responsibility  
for any errors or omissions in the content or photographs in the  
catalog or on the website.*