



ESTB. 1978

WATERWORKS

SEEING MODERN





WATERWORKS CREATES STATE-OF-THE-ART FITTINGS AND FIXTURES THAT COMPLEMENT A WIDE RANGE OF AESTHETIC TASTES.

WITH EVERY NEW PRODUCT LINE, WE SEIZE THE OPPORTUNITY TO REIMAGINE THE RELATIONSHIPS BETWEEN SPACE AND SCALE, FORM AND FUNCTION — TO TRANSFORM MATERIALS INTO NEW ARTFUL EXPRESSIONS.

FORMWORK, THE LATEST ADDITION TO OUR MODERN COLLECTION THAT INCLUDES .25 AND OPUS, REFLECTS OUR PASSION FOR INNOVATION AND HIGHLIGHTS THE BEAUTY OF SCULPTURAL FORMS.

A CONVERSATION BETWEEN PETER SALLICK, CEO / CREATIVE DIRECTOR, WATERWORKS, AND LEE MINDEL, FAIA, PRINCIPAL ARCHITECT, SHELTON, MINDEL & ASSOCIATES.

Peter: Our interest in modern design stems from my passion for collecting 20th-Century furniture and objects. This led me to Shelton, Mindel & Associates who I believe share an intellectual and architectural understanding of modern design in the residential sphere at the highest possible level.

**Lee: For me, designing for Waterworks has always been about creating a harmonious synthesis between form and functionality.**

Peter: I am excited by the fact that we can create products that are original and reflect new ideas.

**Lee: The pursuit of authenticity and not appropriation is something in which we are both interested.**

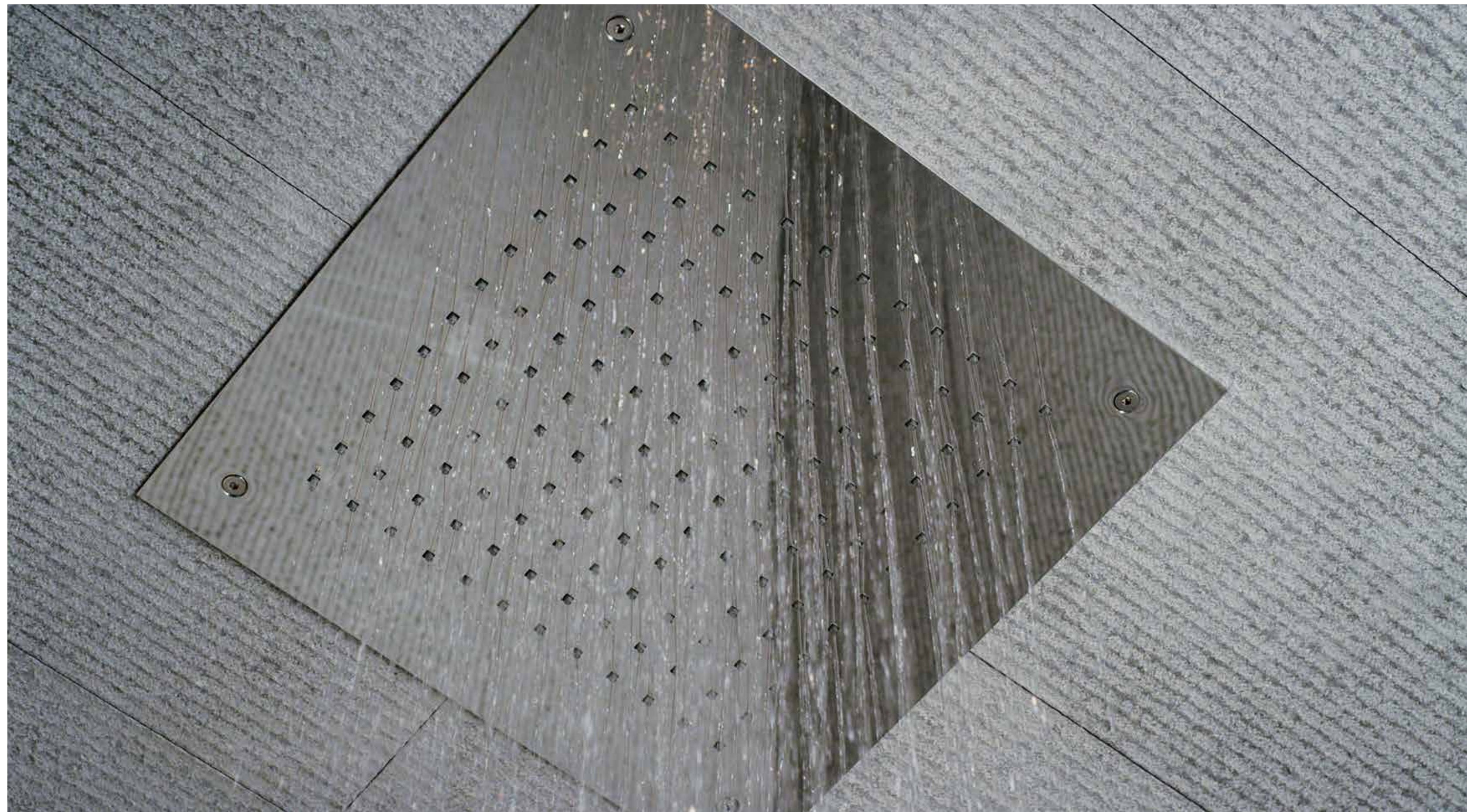
Peter: Formwork is an evolution, built on learning and listening.

**Lee: After you reduce something down to its essence, you don't just walk away — you enter and find out how to enrich it. Formwork is expressive of the ability to transition from one plane to another, seemingly effortlessly, with the lightest of hand.**

Peter: Formwork relies on planes and the intersection of geometric forms for its shape — it is entirely built on great architecture and great design principals. This is also where our sense of craftsmanship meets design.

**Lee: Otto Wagner, widely regarded as the father of modern architecture, said, "All modern creations must correspond to the new materials and demands of the present." I very much believe that.**

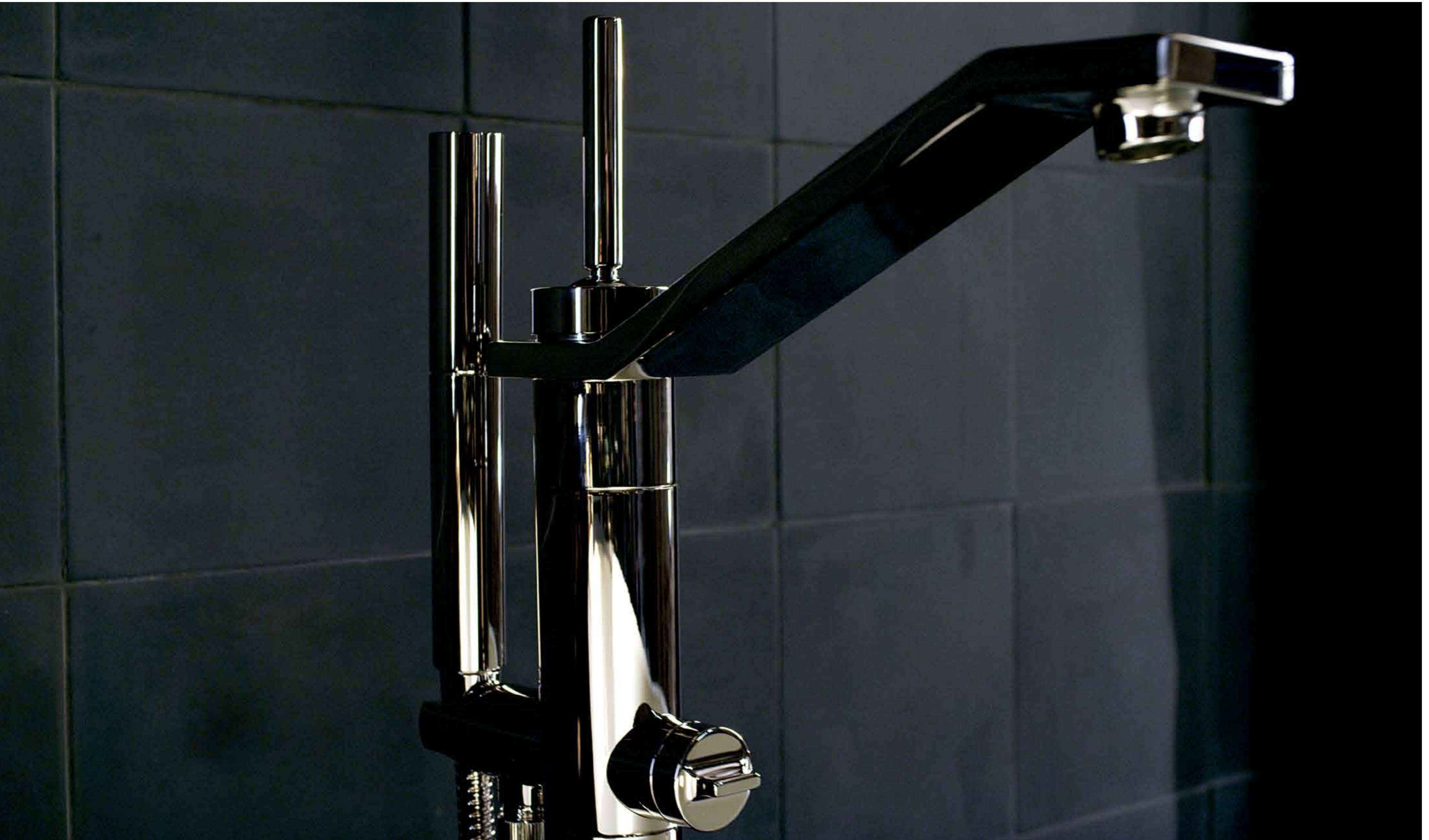






























ESTB. 1978

WATERWORKS