

Issue No. 09

Winter 2026

Waterworks *Made*

P. 04

Marble Mastery

P. 32

Bond: The Making
of a Modern Icon

P. 40

Finishing Details



“

Marble has defined many of the world's most revered spaces for centuries, from Roman baths to Renaissance palaces to iconic modernist homes. It is a material that commands respect and connects us to history.

”

Marble has defined many of the world's most revered spaces for centuries, from Roman baths to Renaissance palaces to iconic modernist homes. It is a material that commands respect and connects us to history. In this issue, we explore our experience designing bath fixtures from marble to honor that legacy while reimagining it for our clients today.

When designing our completely new collections, we stepped back to rethink marble fabrication from start to finish. This isn't just aesthetics; it's engineering and process to solve problems and to inspire. Perhaps most importantly, we have created a product offering that we fabricate in Italy, solely from blocks of Italian marble.

This means that your purchase, from the large scale of a solid marble bathtub to the small detail of a washstand skirt, is a holistic consideration. And we have introduced notched-in backsplashes, integrated overflows, and seamless connection points that resolve every junction and edge detail with precision. At the core is the new “Waterworks Cut”—a substantial 5 cm counter surface for washstands and vanities produced from

these same stone blocks to ensure continuous veining and a monumental feel.

Creating products from marble is often a piecemeal process—visiting stone yards, coordinating fabricators, gluing together multiple slabs, and hoping the installation matches the vision. We've eliminated these hurdles. With our expertise and longstanding relationships, we manage the complexity and deliver the variety, presence, and clarity you expect across sinks, washstands, vanities, and bathtubs without the complication.

That spirit of innovation runs through this issue of *Waterworks Made*. Alongside our exploration of Marble Mastery, you'll find the evolution of Bond—a modern icon that continues to push design forward—and a closer look at the “Finishing Details” that not only elevate the room, but also, its value.

By mastering craftsmanship and the intense nuances of specification, we free you to focus on design.

Discover these stories with the same curiosity and rigor that brought them to life.



Peter Sallick
CEO & Creative Director

WRIGHT
WASHSTAND
in NERO
MARQUINA &
SOLID BRASS

Wright is an ode to industrial luxury. Refined knurled details appear at the top and bottom of each leg, while a brass apron with exposed screws and decorative tabs wraps the upper corners.

Rooted in our profound love for *marble and metal*, we've created *exceptional bath fixtures*, uniting marble fabricated in Italy with metalwork shaped in the US and UK, all refined through a balance of *time-honored tradition and modern technique*.

Marble Mastery

Deliberate design decisions grounded in the elegant materiality of marble.

A Unified LANGUAGE

Metal meets marble in precisely engineered junctions; backsplashes integrate seamlessly, creating uninterrupted architectural planes; edges and profiles reveal the material at its best, precise, intentional and enduring; The Waterworks Cut, our 5 cm-thick counter surfaces, are carved from single blocks, preserving continuous veining and color integrity, the new standard; bathtubs follow the same principle: solid, cohesive, and executed with exacting consistency.



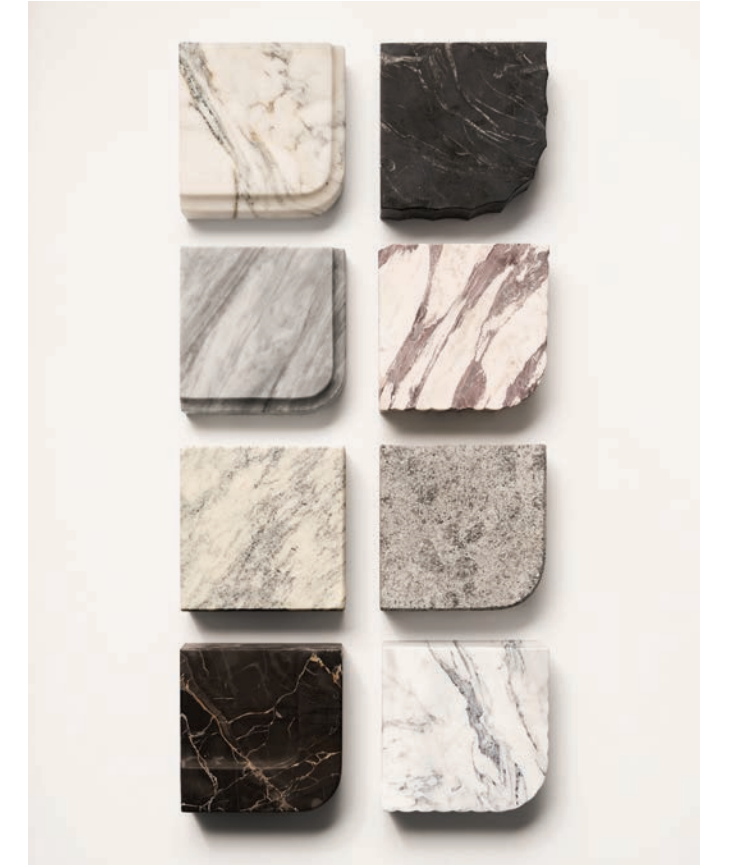
In DETAIL

Our designers work through countless drawings, exploring subtle shifts in radius, edge, and proportion, each idea refined until it feels just right. We believe that design clarity emerges through repetition and scrutiny, through the patient act of drawing and redrawing until every junction feels resolved. What results are forms that carry the quiet confidence that are both purposeful and enduring.



From QUARRY to CRAFT

Once a design meets our exacting standards, we turn to Italy, where our marble is sourced as singular blocks from quarries known for their character and consistency. Each stone is selected not just for color, but for movement and depth, the qualities that reveal the hand of nature. From these blocks, we cut and carve to our precise dimensions, aligning veining across surfaces, preserving the integrity of the original marble, and creating a harmonious relationship between every element.



An Edited PALETTE

Our selection of eight marbles was chosen to express a spectrum of moods and architectural possibilities. Some are bold and expressive, with sweeping veins and dramatic contrast, others are quiet and tonal, revealing their complexity only upon close inspection. Each cut is one-of-a-kind with its own story, a veining pattern and tonal shift that belong to it alone.

Bath Fixtures Redefined,

for the Primary Bath and the Powder Room.

CARVED MARBLE SINKS



CARVED MARBLE SINKS with PEDESTAL



4

CARVED MARBLE SINKS with LEGS



WASHSTANDS with THE WATERWORKS CUT



VANITIES with THE WATERWORKS CUT



5

CARVED MARBLE BATHTUBS





Introducing

5 cm

The Waterworks Cut. *A new standard.*

Each washstand and vanity is crowned with The Waterworks Cut, *an indulgent 5 cm counter surface carved from a single block of marble.* An unapologetic thickness declares permanence, proportioned to complement our washstands and vanities.



for Primary and Powder

WASHSTANDS & VANITIES

featuring The Waterworks Cut

Celebrating exquisite materiality, each washstand features The Waterworks Cut counter surface, paired with architecturally forward bases in solid brass, bronze, marble or blackened steel, transforming what was once purely functional into extraordinary bath furniture. From fluted edges to integrated marble backsplashes and shelving, every detail works in concert to create singular design statements.

Drawing on decades of crafting the world's finest bath fittings, our vanities represent the natural evolution of our metalwork expertise, showcasing the same exquisite integrated metalwork found in our exclusive custom cabinetry. Unified by The Waterworks Cut counter surface and integrated backsplashes, each piece is conceived as an individual, beautifully cohesive expression.



BREWSTER WASHSTAND *in* BARDIGLIO DARK & SOLID BRASS

Tactile and transitional, Brewster lends a space dimensionality through its interplay of metal and marble. The recessed deck echoes the cove detail in the legs, while exposed metal fasteners introduce another layer of materiality.

NEXUS
WASHSTAND *in*
PAONAZZO &
SOLID BRASS

Nexus features solid brass legs that boldly intersect the washstand top, with exposed fasteners that celebrate the mechanical connection between metal and marble. The top's reeded edge detail is perfectly sealed to incorporate the legs into the textured perimeter. An optional matching shelf creates visual continuity while providing practical storage.





GIO
WASHSTAND
in PORTORO &
HAND-CAST
BRONZE

The epitome of transitional elegance, Gio features cast bronze legs with an exclusive dark oxidized finish, and unique hand-sculpted texture. The legs' nearly invisible attachment to the top creates the illusion of floating marble.

FERRO
WASHSTAND
in PEPPERINO
GRIGIO
& HAND-
FORGED
BLACKENED
STEEL

A modern design echoing the elegance and artistry of Art Deco forms. Hand-forged legs telescope down to gracefully meet the floor, each meticulously crafted in blackened steel and finished in a deep black patina.

Ferro legs designed and forged in The Bronx, NY by J.M. Szymanski Workshop and Gallery.





VALOR WASHSTAND *in* FANTASTICO

Valor represents modern minimalism with legs, deck, backsplash, and shelf all flowing from the same marble block. The legs' unique profile nests seamlessly with matching shelf contours, while a brass rail creates refined pin details that remain visible even when the shelf is removed.



LEGACY WASHSTAND *in* FANTASTICO & SOLID BRASS

Crafted from turned brass, Legacy offers a versatile and sophisticated look that's grounded in tradition. Solid brass legs, modeled on classical Regency styles, attach seamlessly.





PULLMAN
VANITY *in*
PAONAZZO &
DRIFTWOOD

Pullman features solid brass metalwork, hand-applied and inset into each panel, creating a timeless, Regency-inspired aesthetic.

Paired with Riverun Faucet and Aria Soap Dispenser



ALTA CURVE
VANITY *in*
FANTASTICO
& SMOKED
OAK

Combining modern minimalism with mid-century elements, Alta features a smooth, continuous facade that showcases the natural beauty of oak and walnut woods.

Paired with Finot Faucet and Floe Soap Dispenser

Singular blocks *of* marble.

We're directly drawn to marble for its permanence, individuality, and quiet authority—each block a singular work of art, rich with natural variation.

Sourced & *of* fabricated *in* Italy.

We turn to Italy for its storied quarry history and unrivaled stone expertise. Every block selected, cut, and finished to our exacting standards, ensuring each piece carries the full integrity of its origin.



for Primary and Powder

MARBLE SINKS & BATHTUBS

carved from a Single Block of Marble

Pairing our hand-carved marble sinks with legs in solid brass, blackened steel, or bronze celebrates striking contrasts between two materials. Conceived as part of the whole, the legs integrate seamlessly into the sinks, transforming support into sculptural presence.

Each original design is hewn from a single, hand-selected block of Italian marble, sculpted to reveal generous deck space, with integrated overflow and backsplash. The

opulent thickness delivers commanding presence, with eight exquisite marble varieties sourced from Italy.

Our bathtubs transcend the ordinary and stand as the defining presence in the room. Presented in an edited selection of Italian marble, each one-of-a-kind piece features a subtle integrated overflow and brings luminous, hand-crafted perfection to the home's most intimate space.

MARBELLA SINK *in* PRUNELLA *with* GIO LEGS

Marbella projects angular poise. Its sculptural forms and softened edges exude sophisticated calm. Paired with Gio legs in hand-cast bronze.





AUDRA SINK
in BARDIGLIO
DARK *with*
LEGACY LEGS

Audra embodies traditional, tailored allure. Its distinctive scalloped corners echo from the sink deck to the backsplash, creating visual continuity and balance. Paired with Legacy legs in solid brass.

CARLO
SINK *in*
PORTORO

Carlo creates a powerful statement through material and movement. Its recessed deck rolls into the basin, creating a ribbon of marble that highlights the material's substantial thickness and weight. Radius corners and a waterfall backsplash complete the sculptural effect.





CENTURIA
PEDESTAL SINK
& BATHTUB *in*
PAONAZZO

Centuria offers a softer, more feminine take on the classic stone sink, featuring an elegant rolled edge and forgoing a backsplash for pure, architectural form.

The opulent, statement-making bathtub, inspired by our iconic Empire silhouette, is defined by its gracefully curved rim and luminous hand-polished finish.





MARTA SINK
in PEPERINO
GRIGIO

Marta embodies the essence of contemporary style through its unique offset design. The expansive and eminently functional deck space also serves as an artistic element, evoking clean-lined intrigue through proportion and placement.

DORIA SINK *in*
FANTASTICO

Doria projects strength through its radiused corners and sweeping curves. Generous deck proportions blend utilitarian elegance with commanding presence.





ALATRI BATHTUB *in* PRUNELLA

Carved from a single block of Italian marble, this showstopping bathtub embodies modern elegance. Hand-finished details and a soft step at the base complete its architectural form.



IBLA BATHTUB *in* CARRARA

Carved by artisans from a single block of Italian marble, the Ibla freestanding tub is perfectly proportioned and hand-finished to reveal the stone's natural beauty. A softly rounded rim and gracefully curved base create a fluid silhouette that conveys balance and sculptural poise.



the MARBLE EDIT

In marble, alabaster, and travertine, these accessories carry forward the commitment to the highest-quality materials that define our fixtures. The result is a unified approach to every item in the bath.



ENZO
Marble Flush Mount Light in Prunella



ESSENTIALS LUXE
Marble Napkin Holder in Bardiglio



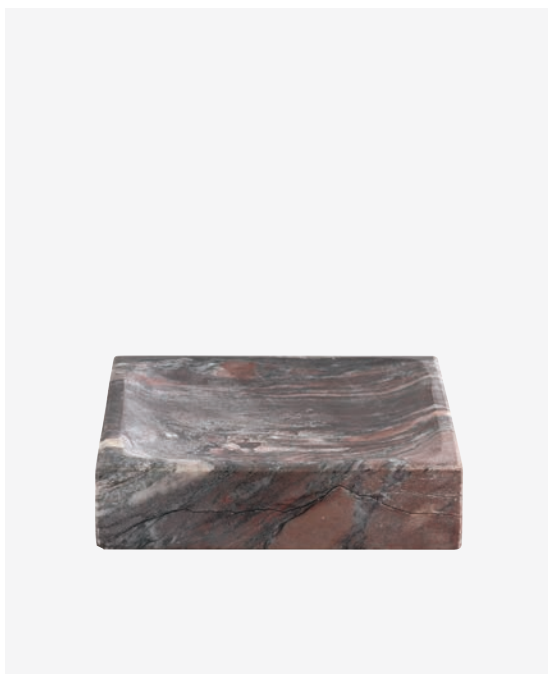
ENZO
Alabaster Wall Sconce



ENZO
Marble Wall Sconce in Bardiglio



ESSENTIALS
Container with Prunella Marble Lid



ESSENTIALS LUXE
Marble Soap Dish in Prunella



DANTE
Marble Wall Sconce in Prunella



CRYSTALLINE
Alabaster Countertop Accessories



ANDRIAN
Stone Soap Dispenser in Travertine



ANDRIAN
Marble Countertop Accessories in Bardiglio



ESSENTIALS LUXE
Guest Towel Holder with Prunella Marble Base



ESSENTIALS LUXE
Marble Towel Warmers in Nero Marquina



HENRY CHRONOS
Alabaster Flush Mount Light



ANDRIAN
Marble Container in Nero Marquina



DANTE
Alabaster Wall Sconce

BOND

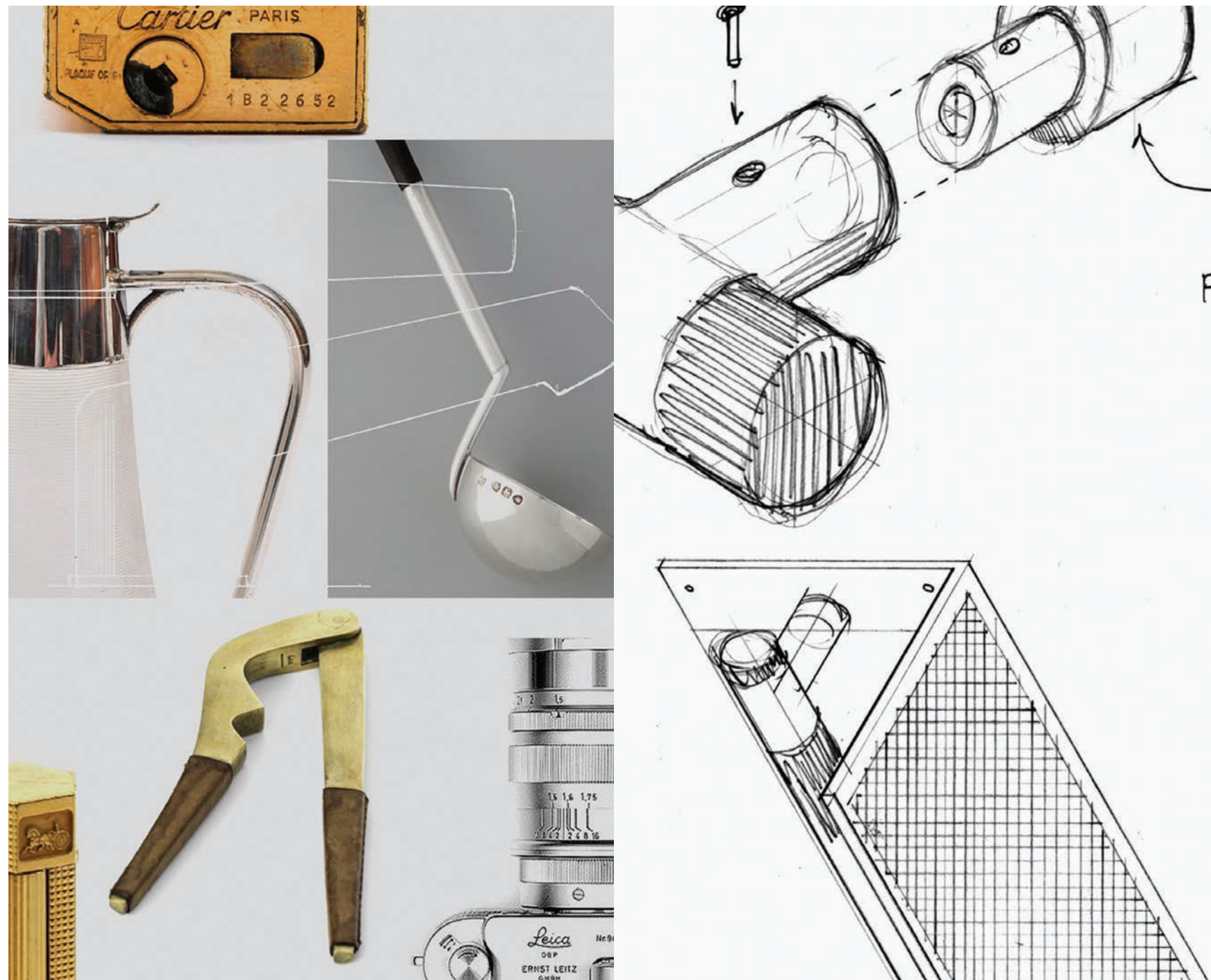
*the Making of
a Modern Icon*

Modernism has long prized purity: clean lines, minimal detail, perfection through reduction. But along the way, that purity became absent of texture, warmth, and human connection.

Bond was conceived as a counterpoint, a modern collection that restores tactility, proportion, and soul to contemporary design. It is geometric but never severe, elegant yet approachable. Each form is direct and confident, softened by subtle transitions and radii that make every surface feel quietly refined.

Every element—from handle to spout to escutcheon—was designed through the lens of touch. Corners rest comfortably in hand. Planes reflect light softly rather than sharply. The result is modernism that doesn't demand attention but earns it, a collection composed rather than constructed.





Finding INSPIRATION

Bond draws from an unexpected intersection of eras and disciplines. The team studied the late 19th-century Aesthetic Movement, where craftsmanship and ornament celebrated structure rather than obscured it. Inspiration also came from vintage lighters, admired for their tactile geometry and engine-turned detail, and the pragmatic beauty of industrial design.

Different as these influences may seem, each shares a devotion to proportion, precision, and the honesty of materials, articulated through meticulous engraving techniques and rich enamel. Bond distills those values into a contemporary expression that feels clean, enduring, and quietly luxurious.

ENDURING *by* DESIGN

From inception, Bond was imagined not as a style but as a standard. A new reference for what modern design can achieve when design, engineering, and making merge.

Bond lasts because it was built with purpose, not trend. Modern, yes, but human above all. That is its quiet genius: a collection defined not by novelty, but by discipline, craft, and time.

ABOVE
Early inspiration and hand-drawing



The ART of GUILLOCHÉ

Guilloché is beauty born of precision and control. Each pattern begins as a sequence of meticulously plotted lines, engraved into solid brass with 18th-century engine-turning machines. The artisan adjusts rotation by hand, guiding a diamond-tipped tool to carve rhythmic, shimmering lines.

Few masters still possess the skill and machinery to achieve this at scale where the delicate choreography between tool and instinct are perfected.

On Bond, guilloché softens reflectivity, diffuses light, and invites touch. Under changing light, the surface shifts from graphic to subtle. The engraving isn't what makes Bond rare; it is what makes it alive, transforming fittings into heirloom objects.



The ART of ENAMEL

The Bond collection marries modern design with time-honored enameling techniques. In a delicate process, artisans use the intense heat of the kiln to fuse powdered colored glass to solid brass components.

The powder melts and hardens to an exquisitely smooth, durable surface. Each enamel color is mixed to our exact specifications, ensuring a perfect degree of opacity and sheen.

TOP
Guilloché engraving with 18th c.
engine turning machine

BOTTOM
Finely ground powdered glass,
ready for firing onto metal

“Bond’s three series make the collection beautifully versatile. It’s pioneering in the way it allows you to integrate new design details in a modern space.”

– Peter Sallick

Three DISTINCT SERIES

Bond’s refinement extends beyond what you see; it is built into its structure. The collection is grouped in distinct series—each defined by ever-more specialized details and tied to a common base silhouette. Across the Solo, Tandem, and Union series, Bond evolves from essential to expressive, perfectly poised for a Manhattan penthouse or a mid-century masterpiece.



SOLO establishes the foundation: distilled geometry, elemental proportion, pure restraint. A balance of form and function in its purest sense. Streamlined and minimalist with clean, crisp edges, Solo is the only Bond series that has slightly curved lever handles, along with the ability to be made in all Waterworks special-order metal finishes.



TANDEM introduces two new design elements: mixed metals and linear guilloche etching. Each guilloche lever is detailed with 80 hand-applied lines, and each knob with 240 lines, for a precise, luxurious look and feel.



UNION presents three additional design elements: an intricate guilloche links pattern; guilloche lines combined with colorful enamel; or pinstripe, a technique in which an enamel handle is treated with guilloche, revealing the beautiful metal finish beneath the pattern, and then plated in a brass or nickel finish.





Designed by Bonesteel Trout Hall Interiors
Photographed by Jeff Holt



Designed by Dana Koebbe Interiors
Photographed by Tim Lenz



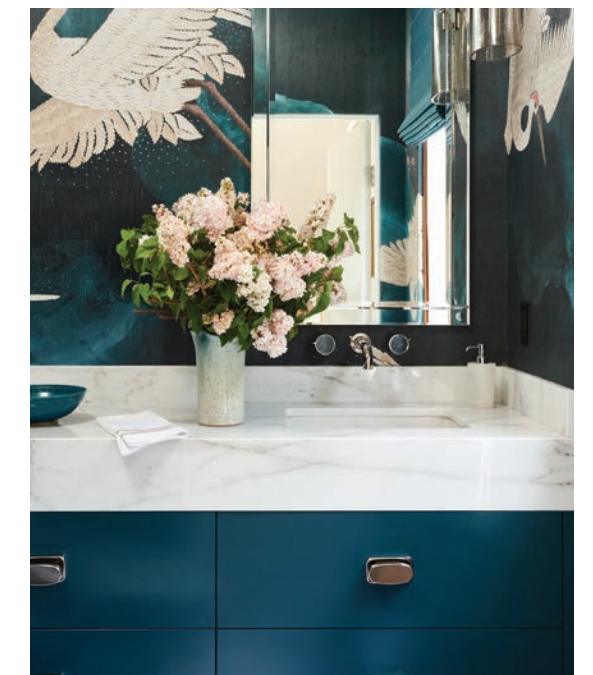
Designed by General Assembly
Photographed by William Jess Laird



Designed by Jennifer Bunsu
Photographed by Nicole Franzen



Designed by Morrison Design House
Photographed by Sean Litchfield



Designed by Seyie Putsure
Photographed by Dominique Vorillon

DESIGNED *in* PARTNERSHIP
with GACHOT STUDIOS

Developed in collaboration with GACHOT Studios, Bond embodies a shared pursuit of modernism, design that pairs precision with humanity. The process was a dialogue of proportion, weight, and detail, refined until the collection felt inevitable in hand and harmonious in space.

The resulting forms are honest and enduring, geometric but never cold. Every curve, color, and engraving reflects a belief that modern design should invite, not exclude.

“These are investment pieces with longevity and heritage. Whatever the trends are, these will transcend them.”

– John Gachot

ABOVE
Designed by GACHOT Studios
Photographed by William Jess Laird

RIGHT
Designer Gallery featuring Bond



Designed by Studiossoo
Photographed by Common Studio



Designed by Shawn Henderson
Photographed by Stephen Kent Johnson



Designed by BUILTIN Studio
Photographed by William Jess Laird



Universal Bathtub Overflow in Brass
paired with Emile Bathtub



FINISHING DETAILS

P-Traps, Supply Kits, Overflows, and Drains
that Complete the Composition



Finishing details may be functional at their core, but they are also expressions of design discipline. Cast in solid brass and offered in a range of our metal finishes, these elements ensure that every connection, seen or unseen, contributes to the visual and technical integrity of the whole.



Designed to align seamlessly with our fixtures, these components not only enhance durability but elevate the overall value of the space, because quality must extend to every detail.



TOP
Universal Bottle P-Trap *in* Nickel
paired with Doria Sink and Henry Chronos Faucet

MIDDLE
Universal Standard P-Trap *in* Brass and
Universal Transitional Supply Kit *in* Brass

BOTTOM
Universal Watercloset Supply *in* Chrome
paired with Alden Watercloset



UNIVERSAL *Standard P-Trap*
in DARK BRASS



UNIVERSAL *Modern Angle Lavatory Supply Kit*
in NICKEL



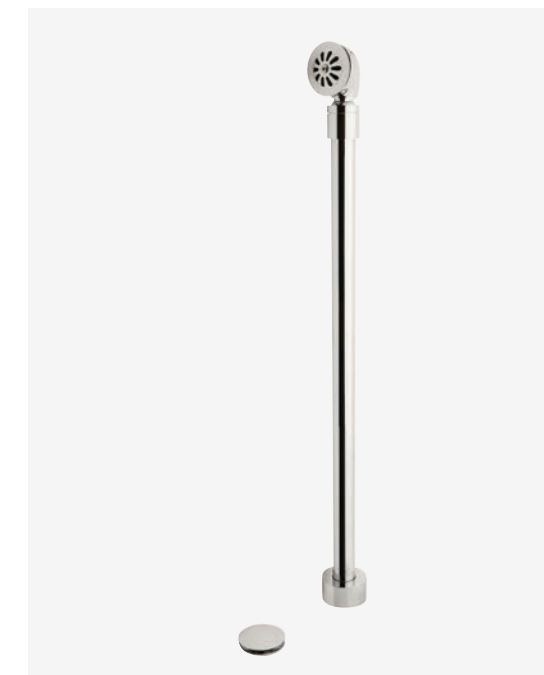
UNIVERSAL *Shower Drain*
in BRASS



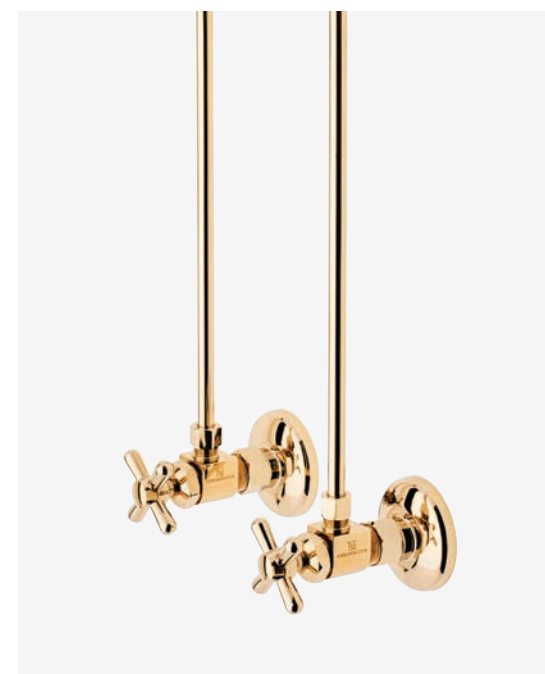
CLOTHILDE *Stand Pipe Waste and Overflow Drain*
in NICKEL



UNIVERSAL *Fixed Drain*
in NICKEL



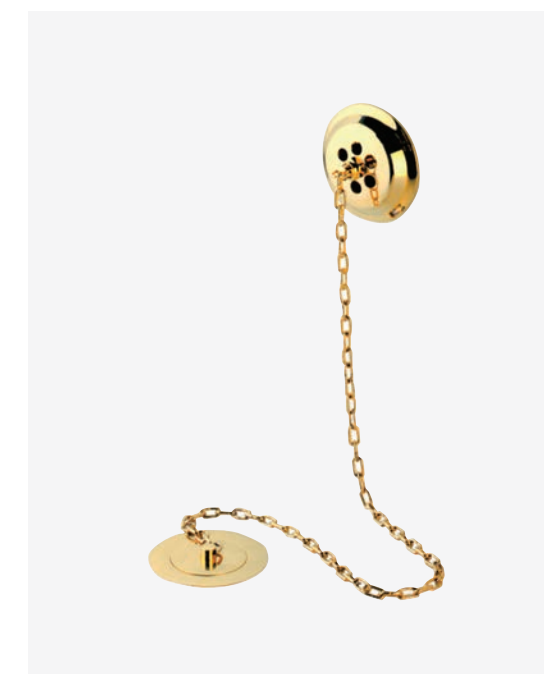
UNIVERSAL *Push-Touch Drain with Overflow*
in NICKEL



UNIVERSAL *Transitional Angle Lavatory Supply Kit*
in BRASS



UNIVERSAL *Modern Bottle P-Trap*
in NICKEL



EMPIRE *Drain Plug Waste and Overflow Drain*
in BRASS

NEKAJUI



Hospitality Spotlight

*Nekajui Peninsula Papagayo,
a Ritz-Carlton Reserve*

Nekajui, the first Ritz-Carlton Reserve in Central America, emerges from Peninsula Papagayo's cliffs using native materials and local craftsmanship at every turn. Developed by The Athens Group with interiors by Gensler & BAMO, the property blends seamlessly into its dramatic coastal landscape.

Throughout 107 rooms and 37 residences, Waterworks modern Bond fittings in antique brass and dark nickel reflect the character of the location, translated through material and craft.





WATERWORKS

60 BACKUS AVE
DANBURY, CT 06810
WATERWORKS.COM

PRSR STD
U.S. POSTAGE
PAID
MILFORD, CT
PERMIT NO. 80



The Metropolitan Opera House
Designed by GACHOT Studios
Photographed by William Jess Laird



Inspiration Awaits

THE WATERWORKS PROJECT GALLERY



WATERWORKS

60 BACKUS AVE
DANBURY, CT 06810
WATERWORKS.COM



The Metropolitan Opera House
Designed by GACHOT Studios
Photographed by William Jess Laird



Inspiration Awaits

THE WATERWORKS PROJECT GALLERY



WATERWORKS

579-581 KING'S RD
LONDON, ENGLAND SW6 2EH
WATERWORKS.COM



The Metropolitan Opera House
Designed by GACHOT Studios
Photographed by William Jess Laird



Inspiration Awaits

THE WATERWORKS PROJECT GALLERY